

# World's Largest War Games Come to Hawaiian Air, Land & Water

Participants in the world's largest war games arrived over the last few weeks to test their mettle in Hawaiian air, land and water. Sailing to RIMPAC, the Rim of the Pacific Exercise, the first war ships arrived from South Korea and are joined by military from the U.S. and many other countries. RIMPAC takes place every other year. The 2016 games were scheduled for June 30 - Aug. 4.

The U.S. Pacific Fleet hosts RIMPAC. The 2016 exercises are led by U.S. Vice Adm. Nora Tyson, commander of the U.S. Third Fleet (C3F). Army, Navy, Air Force,

Marine and Coast Guard services perform. Participants in this twenty-fifth RIMPAC – the first was in 1971 – are: Australia, Brazil, Brunei, Canada, Chile, Colombia, Denmark, France, Germany, India, Indonesia, Italy, Japan, Malaysia, Mexico, the Netherlands, New Zealand, Norway, China, Peru, South Korea, Philippines, Singapore, Thailand, Tonga, the United Kingdom and the U.S. This is year one for Brazil, Denmark, Germany and Italy.

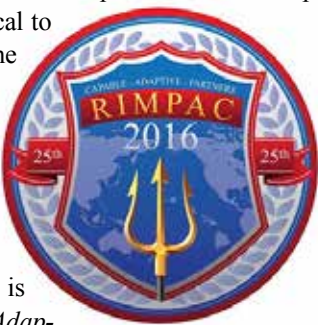
The 27 countries are sending 25,000 personnel, planes, helicopters, war ships,

aircraft carriers, boats and submarines, fully loaded with weapons, including missiles for war games in both Hawaiian and Californian waters. According to the military *Stars and Stripes* newspaper, among the exercises will be “amphibious operations, gunnery, counter-piracy, mine clearance, explosive ordnance disposal and diving and salvage operations. Defensive training against missiles, submarines and aircraft will also take place.”

According to a statement from the U.S. Pacific Fleet, “RIMPAC provides a unique training opportunity that helps participants

foster and sustain cooperative relationships that are critical to ensuring the safety of sea lanes and security on the world's oceans.”

The 2016 theme is *Capable, Adaptive, Partners*. “The



War Games, pg. 4

## THE KA'Ū CALENDAR

Volume 14, Number 6 The Good News of Ka'ū, Hawai'i July, 2016

### Candidates Look for All Ka'ū Citizens to Vote in August

The ballot is set to vote for county, state and federal officials in the Hawai'i Primary Election. Voter registration deadline is July 14. Early voting and absentee voting begin Aug. 1, with the last day to apply for absentee voting set for Aug. 6. Primary Election Day is Saturday, Aug. 13. Not on the ballot this year are offices held by Gov. David Ige and Ka'ū's state Sen. Josh Green.

#### County Council

Hawai'i County Council District Six member Maile Medeiros David, of Captain Cook, faces a challenge from Raina Whiting of Ocean View. David came into office in 2014, when former council member Brenda Ford reached her term limit.

Whiting, a teacher at Nā'ālehu School, attended Hawai'i Democratic Party's convention on O'ahu, where she was the nominator of Tim Vandever, the party's new chair. Also a supporter of presidential candidate Bernie Sanders, Whiting attended the state convention as a delegate from Ocean View and will also travel to the Democratic National Convention. In the state Democratic Party, she is District V Council Vice Chair, Precinct 5-02 President (Ocean View), Congressional District II (Rural O'ahu/Neighbor Islands) National Convention Delegate and an Environmental Caucus At-Large Officer.

During her 2014 campaign, David described becoming a County Council member a “natural progression” in her life. She has a 30-year career as a paralegal and worked as a council staff member under former county council member Angel Pilago. She said her

Candidates, pg. 4



Honu green sea turtles at Punalu'u leave to nest in northern islands. Photo by Julia Neal

### Sea Turtle Nesting Season is Here

Summer is here, and with it comes sea turtle nesting season in Ka'ū. As a result, beachgoers may witness increased sea turtle activity, including mating in nearshore waters as well as more basking on beaches. The U.S. Fish and Wildlife Service, NOAA Fisheries and Hawai'i Department of Land and Natural Resources reminds everyone – locals and visitors alike – to respect the sea turtles at all times of the year.

The two species that nest in the islands are the green sea turtle (honu in Hawaiian) and the hawksbill sea turtle ('ea). The majority of Hawai'i's honu migrate to French Frigate Shoals – located in the Northwestern Hawaiian Islands – to reproduce. However, an increasing number of honu are now nesting on beaches of the main Hawaiian Islands.

Primary 'ea nesting beaches occur along the south Ka'ū Coast, south Maui and eastern Moloka'i. Both species are protected under state and federal laws.

If a honu or 'ea is seen on the beach

Turtle Nesting, pg. 12

### Fishing Tournaments, Biologists Encourage the Barbless Hook

Sports fishing enthusiasts and biologists are joining together to promote the barbless hooks that protect turtles, monk seals and other unintended catch.

Kurt Kawamoto, a fisheries biologist with the National Oceanic and Atmospheric Administration's Pacific Islands Fisheries Science Center, helps lead the campaign and is partnering with S. Tokinaga Store, which sponsors the annual Ulua Challenge and Omilu fishing contests. The contests landed record catches in June along Ka'ū Coast and other shorelines around the island. See results on Page 5.

Kawamoto earned the moniker Mr. Barbless Hook as the driving force behind NOAA's and Hawai'i Department of Land & Natural Re-

sources' Barbless Circle Hook Project. He said that making a barbless hook is really simple; use a pair of pliers to smash down the barb. “Once you smash down the barbs on these hooks, they become self-shedding, so that was the main idea behind it,” he said. “It's easy for a fish or a seal or a turtle to get rid of the hook themselves.”

Researchers have witnessed a monk seal actually shed a barbless circle hook, and anglers have relayed stories about sea turtles also easily expelling barbless hooks. Although it's easier for animals to rid themselves of the hooks, research, angler reports and actual catches with barbless circle hooks have proven their efficacy when it comes to catching target fish. During a shoreline

Barbless Hooks, pg. 7



Ulua Challenge contestants were encouraged by S. Tokinaga Store tournament organizers to use barbless hooks to protect monk seals, turtles and other creatures. Photo by David Corrigan/Big Island Video News

PRSRT STD  
US POSTAGE  
PAID  
PAHALA, HI  
PERMIT NO.1

\*\*\*\*ECRWSS  
Postal Boxholder

Also in this issue: P2 Business \* P3 Pāhala \*  
P5 Sports \* P6 Sports Calendar \* P8 Event  
Calendar \* P10 Nā'ālehu \* P11 Kahuku to  
Miloli'i \* P12 Star Map \* P13 Health \* P14  
Volcano \* P15 Energy & Sustainability



# KA'U BUSINESS & REAL ESTATE

Volume 14, Number 6

The Good News of Ka'ū, Hawai'i

July 2016

## Punalu'u Bake Shop Owner Reaches Out to Homeless

The owner of Punalu'u Bake Shop in the Islands and on the mainland. He soon is reaching out to homeless people through his foundation and will partner to create affordable housing with gardens on O'ahu.

According to the website of his company called aio, "Duane Kurisu was instilled early on with the traditional values of Hawai'i's plantation culture. A product of Hilo High School and the University of Hawai'i-Mānoa, Duane launched his first company in his late 20s to develop and manage commercial real estate properties



**Duane Kurisu is creating affordable housing through his foundation.**  
Photo by Pamela Taylor

branched out into a variety of business interests, and the acquisition of his first magazine property in the 1990s led to the creation of the aio family of companies.

"Today, Duane's plantation roots still shape his vision for aio. Those time-honored small-town values of family and community are equally important in the world of commerce and industry – the local values of trust, respect, humility and hon-

esty that drive the companies and inspire the people of aio."

In his mission to help the homeless, Kurisu is partnering with Honolulu and the state to build more than 200 affordable, plantation-style homes on reclaimed land in Honolulu. Rent would be \$500 per month. The city is purchasing 13.1 acres from the state and leasing it to Kurisu for one dollar per year.

"The mayor stepped in to help facilitate the property and the project to be part of the governor's emergency proclamation (addressing homelessness issues)," Kurisu told Duane Shimogawa, of *Pacific Business News*. "It is the culmination of the state and the city com-

ing together to seek and work out solutions to one of the most acute problems facing us today." In addition to Punalu'u Bakeshop, which opened its own cookie factory last year, Kurisu owns interests in publishing and printing, technology, sports and food.

## Chinese Investments Grow Statewide

Chinese investors in Hawai'i are spending nearly a billion dollars in buying real estate throughout the islands. With a middle class of some 300 million people, about the population of the U.S., China is home to many who want to travel, and a number of them would like to invest in Hawai'i's economy, an article in *Pacific Business News* pointed out.

The purchase of 1,200 acres above Nā'ālehu is planned for a tea farm with coffee and other diversified agriculture and may include an agricultural visitor center. A tea

plant nursery is being constructed between the Nā'ālehu cemetery and the pig farm. Representatives of Ka'ū Royal Coffee & Tea, LLC and its Ka'ū Valley Ranch are attended a World Tea Expo at the Las Vegas Convention Center last month. Their investment group and management includes both residents of China and the U.S. Some of the Chinese nationals are investing through the EB5 immigration program that helps them obtain green cards through investing in economically depressed communities.

According to *PBN*, Chinese investments

on O'ahu alone range from "an office building in Honolulu to several development sites at Ko Olina Resort to more than 500 acres that connect Ko Olina with Kapolei. But it's unknown whether this first wave of Chinese investment will resemble the tsunami of Japanese investments," *pg. 12*

## CA Queries HELCO on Ocean View

Should the community and government officials talk about more than just a transmission line? That's the question Ocean View residents are asking regarding a question-and-answer exchange about the controversial solar project that proposes to put 27 installations in three makai residential subdivisions in Ocean View – many of them among homes. Hawai'i Consumer Advocate is asking questions that Hawai'i Electric Light Company is required to answer.

HELCO has applied to the state Public Utilities Commission for permission to build a new overhead high-voltage transmission line that would connect the project to the grid.

On May 18, Ono filed 24 pages of questions to HELCO. He wanted answers to a range of questions, including the cost of undergrounding

the transmission line, maintaining an underground line for 20 years and its removal. He also asked for costs of operating and maintaining the substation for 20 years and its removal, and cost of restoring neighborhood homesites that developers intend to use for solar installations.

HELCO has repeatedly stated that three solar developers involved will bear costs of

*HELCO, pg. 5*

### **hawaiihomebuy.com**

**View featured listing and Hawaii MLS**

**Teresa Anderson, S**

**(808) 937-7919**

**teresainhawaii@gmail.com**

**Kona Ka'ū Realty**

*We are proud to announce  
Teresa Anderson is on our 5 Star  
Team. Mahalo. With Aloha!  
Tom Edwards, PB Kona Ka'ū Realty*



## THE KA'U CALENDAR

The Good News of Ka'ū  
July 2016, Vol. 14, No. 7

**Published by:**

The Ka'ū Calendar, LLC.

P.O. Box 940, Pāhala, HI 96777  
Phone: (808) 928-6471  
[www.kaucalendar.com](http://www.kaucalendar.com)

**Publisher & Editor:** Julia Neal  
(mahalo@aloha.net)

**Story Editor & Calendar:** Ron Johnson  
(ron@kaucalendar.com)

**Associate Editor:** Nālani Parlin  
**Design/Production:** Tanya Ibarra

**Contributors:** Elijah Navarro, Lew Cook, Geneveve Fyvie,  
Ann Bosted

**Assembling:** Ka'ū Community Volunteers

**For advertising call:**

Ron Johnson at 928-6471 or [ron@kaucalendar.com](mailto:ron@kaucalendar.com)  
Nālani Parlin at 217-6893 or [kaucalendar@gmail.com](mailto:kaucalendar@gmail.com)  
Lee Neal at [fonseca33@aol.com](mailto:fonseca33@aol.com)  
Geneveve Fyvie at [geneveve.fyvie@gmail.com](mailto:geneveve.fyvie@gmail.com) or  
Elijah Navarro at 928-6471 or [e38navarro@gmail.com](mailto:e38navarro@gmail.com)

**Printed by** Hawai'i Hochi  
[www.kaunewsbriefs.blogspot.com](http://www.kaunewsbriefs.blogspot.com)

follow us on  
twitter

JOIN US ON  
facebook

**The WAY  
to all  
your Big  
Island  
Real  
Estate  
Needs!**



Francis B. McClelland (Mack), RB  
Office: 808-315-5343  
Fax: 888-612-6929  
P.O. Box 104  
Nāalehu HI 96772  
[mack717@hawaii.rr.com](mailto:mack717@hawaii.rr.com)



**CAMINO  
PROPERTIES**

[www.CaminoProperties.com](http://www.CaminoProperties.com)

## Kea'au Recycling and Reuse Center

**Open 8 a.m. – 5 p.m. Daily**  
(closed Thanksgiving, Christmas, New Year's Days)

### Home Remodeling and Reuse Tent

Next door to the Kea'au Transfer Station

**Low Prices at our  
"Still Good Stuff"  
Garage Sales**

-- latex paint selection @ \$5/gallon  
-- furniture, fixtures, lighting & more

Contractor drop-offs welcome -  
help divert usable leftovers from the landfill.



Highway 130  
1st left past the  
Hawaii Humane Society  
Pahoa-bound

**Call 895-6815  
for more information.**

## KA'ALU'ALU OCEANFRONT RANCH

1,836 acres of gently sloping mixed pasture that flows from approximately 680 foot ASL to a protected ocean cove at Ka'alu'alu Bay.

Sweeping ocean, sunrise and coast line views!

**\$2,950,000 MLS 278051**

**Call for map and price list or your personal showing!**

**Charles A. Anderson, PB (808) 895-5554 [charlie@bigisle.com](mailto:charlie@bigisle.com)**

**Hawaii Pacific Brokers, LLC 65-1323 Kawaihae Rd.**

**Kamuela, HI 96743 808-885-5557**

**[www.BigIsle.com](http://www.BigIsle.com)**



# KA PEPA PĀHALA

Volume 14, Number 6

The Good News of Ka'ū, Hawai'i

July 2016

## Musicians to Support KAHU Radio, Honor Ka'ū Coffee

Opera singer Amy Shoremount-Obra returns to Pāhala Plantation House on Saturday, Aug. 13 at 6 p.m. The concert, a tribute to the 20th anniversary of the Ka'ū Coffee industry, features the soprano, internationally acclaimed violinist Eric Silberberger, cellist Daniel Lelchuk and pianist Kwan Yi. It is one in a series in the inaugural year of the Hawai'i International Music Festival, with other performances at Maui Arts & Cultural Center and on O'ahu. It will also be a fundraiser for Ka'ū community organizations.

The concert, a tribute to the 20th anniversary of the post-plantation Ka'ū Coffee industry will, in part, raise funds for Hawai'i Public Radio and its efforts to bring a stronger and more reliable signal to all of Ka'ū and the entire state. HPR operates KAHU radio and work is in progress on a tower toward expanding the broadcast to the entire community. The

coverage is also considered critical for Civil Defense as much of Ka'ū is without any emergency radio reception.

Featured will be the soprano, Amy Shoremount-Obra, who made her Metropolitan Opera Debut in October 2014 as First Lady in Mozart's *Die Zauberflöte*, singing all nine performances of the opera, three of which were Sirius XM Satellite broadcasts.

Her recent operatic engagements have included Donna Anna in *Don Giovanni* with Opera Las Vegas, The Savannah Voice Festival and New York City's new Venture Opera, Marchesa

in Verdi's *Un Giorno di Regno* with Odyssey Opera of Boston, Fiordiligi in *Così fan tutte* with Annapolis Opera, and most recently, Leonore in Beethoven's *Fidelio* with

*Grand Harmonie*. Shoremount-Obra has appeared at Carnegie

Hall as the soprano soloist in Fauré's *Requiem*, Brahms' *Requiem* and Schubert's *Mass in G* and at David Geffen Hall as the Soprano Soloist in

Verdi's *Requiem*. She was a National semi-finalist and New York regional winner in the Metropolitan Opera National Council auditions and holds degrees from Manhattan School of Music and Juilliard.

Eric Silberberger is a winner of the International Tchaikovsky Competition and recently played violin inside a volcano in Iceland. He is excited to visit the volcano here in Ka'ū, said Shoremount-Obra. Silberberger is also winner of the Michael Hill International Violin Competition.

His performances have been described as "spine-tingling ... astonishing" by *The Guardian*, "dazzling virtuoso playing" by *The Washington Post*, "impeccable level of playing, a wonderful musician" by Heather Kurzbauer, of *The Strad*, and "he has got everything in his favour, technique, composure and personality. We are on the eve of a great soloist," by

Spain's *El Pais*.

Silberberger has performed as soloist, recitalist and chamber musician throughout the United States and around the world, including solo performances with the St. Petersburg Philharmonia, Chamber Orchestra of the Mariinsky Theatre, London

*Music Festival, pg. 12*



**Shoremount-Obra brings internationally acclaimed classical musicians to Pāhala.**

*See amhyshoremount-obra.com.*



**Eric Silberberger, playing violin in an Icelandic volcano, comes to Ka'ū in August.**

*See Eric silberger.com.*



**Daniel Lelchuk is a cellist and co-founder of the new Hawai'i Music Festival.**

*See daniellelchuk.com.*



**Kwon Yi, the pianist of lyrical elegance, performs on Saturday, Aug. 13.**

*See kwonyi.com.*

### AIKANE PLANTATION COFFEE COMPANY

**Ka'ū Coffee & Gifts**

[www.aikaneplantation.com](http://www.aikaneplantation.com)

**808-927-2252**



### ALI'I HAWAIIAN HULA HANDS COFFEE



**2014 Hawaii 1st Place HCA**



**2012 SCAA Coffee of the Year**

**928-0606 • [www.aliihhhcoffee.com](http://www.aliihhhcoffee.com)**

### Guide to Ka'ū Churches

<b>VOLCANO</b>	
• New Hope Christian Fellowship .....	967-7129
• Volcano Assembly of God .....	967-8191
<b>PĀHALA</b>	
• River of Life Assembly of God .....	928-0608
• Holy Rosary .....	928-8208
• Pāhala Bible Baptist Mission .....	928-8240
• Pāhala Hongwanji .....	928-8254
• Wood Valley Tibetan Buddhist Temple & Retreat .....	928-8539
<b>NĀ'ĀLEHU</b>	
• Assembly of God .....	929-7278
• Iglesia Ni Cristo .....	929-9173
• Jehovah's Witnesses .....	929-7602
• Kauahā'ao Church .....	929-9997
• Latter Day Saints .....	929-7123
• Light House Baptist .....	939-8536
• Nā'ālehu Hongwanji Buddhist Temple - 95-5693 Mamalahoa Hwy., Nā'ālehu, HI 96772	
• Sacred Heart .....	929-7474
• United Methodist .....	929-9949

• Christian Church Thy Word Ministry .....	936-9114
Nā'ālehu Hongwanji, Sundays 10 a.m.	
<b>OCEAN VIEW</b>	
• Kahuku UCC .....	929-8630
• Ocean View Baptist Church .....	430-8268
Worship Service: Sunday, 1 p.m. Ocean View Community Center. All are welcome!	
• OV Evangelical Community Church .....	939-9089
• St. Jude's Episcopal .....	939-7000
• Divine Faith Ministries 929-8570 (non-denominational) meets Ocean View Community Center 10 am Sundays, Children, Youth, Bible Study. Call for more information.	
• Church of Christ .....	928-0027
Back to the Bible! 9 am, Bible class studying Romans. Worship 10A.M. Expository lessons from N.T. Books	

**DON'T ACCEPT SECOND-BEST!!**

**THE VOTERS DESERVE TO HAVE ONLY THE FINEST INDIVIDUAL AS YOUR MAYOR**



**ON 13 AUGUST, SELECT THE BEST!!**

**CHOOSE AN INDIVIDUAL WITH THE BACKGROUND, KNOWLEDGE, LEADERSHIP AND INTEGRITY TO LEAD OUR COUNTY FORWARD.**

**VOTE**

**PETE HOFFMANN**

Paid for by friends of Pete Hoffmann. DOR 385767 Waikoloa HI 96738



# War Games, cont. from pg. 1

participating nations and forces will exercise a wide range of capabilities and demonstrate the inherent flexibility of maritime forces. These capabilities range from disaster relief and maritime security operations to sea con-

trol and complex warfighting. The relevant, realistic training program includes amphibious operations, gunnery, missile, anti-submarine and air defense exercises, as well as counter-piracy, mine clearance operations, explosive ordnance disposal and diving and

salvage operations," says the Pacific Fleet statement.

The statement also points to the Department of the Navy's Great Green Fleet initiative. It "highlights global operations using energy conservation measures and alternative fuel blends to demonstrate how optimizing energy use increases resiliency and operational readiness. During RIMPAC, almost all participating units will operate using an

approved alternate-fuel blend."

Environmental groups in Hawai'i and elsewhere have watchdogged RIMPAC for decades, pointing to possible damage to marine life caught up in the noise of the war games, the electronic signaling between the participants and the sinking of ships. Rules of the game call for lookouts for whales and other marine species.

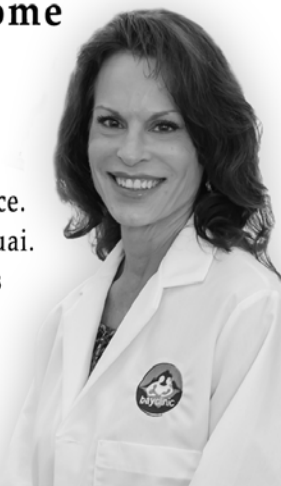
## Bay Clinic, Inc. is Proud to Welcome

### Charlotte Louise Hunter, MD PHYSICIAN

Board Certified in Family Medicine

Dr. Hunter has over 23 years of family practice experience. She spent 12 years as a private practice physician on Kauai. She was also a volunteer physician in Fiji and in Haiti as part of the 2010 earthquake relief effort.

Dr. Hunter will be joining our Ka'ū Family Health and Dental Center. Bay Clinic's clinical team is excited to welcome Dr. Hunter aboard.



Call Today for an Appointment - New Patients Welcome

#### UNDERGRADUATE DEGREE

Pomona College, Claremont, CA

University of Southern California, Los Angeles, CA

#### GRADUATE DEGREE

University of California at Irvine, Irvine, CA

#### RESIDENCY

Ventura County / UCLA Family Medicine Residency, Ventura, CA

University of Washington, General Surgical Internship, Seattle, WA



Ka'ū Family Health & Dental Center 929-7311  
[bayclinic.org](http://bayclinic.org)

## Candidates, cont. from pg. 1

life's work is to preserve and protect native Hawaiian cultural resources and said they are tied to protection of the environment. She said she worked on Native Hawaiian access to cultural and environmental sites, leading to the requirement of not only environmental impact statements but also cultural impact statements.

### Mayor

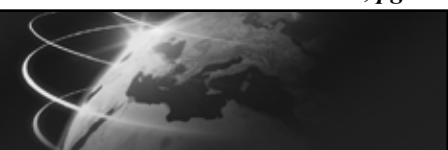
One of thirteen candidates will replace Mayor Billy Kenoi, who has reached his term limits. Those who filed papers to succeed Kenoi are Alvin Akina, of Kailua Kona; Paul Bryant, of Papa'aloa; Daniel Cunningham,

of Hilo; Marlene Hapai, of Kurtistown; former Hawai'i County Council member Pete Hoffmann, of Waikoloa; KAHU 91.7 FM radio station founder Wendell Ka'ehu'ae'a, of Hilo; former Mayor Harry Kim, of Hilo; former Hawai'i County Managing Director Wally Lau, of Kailua-Kona; Helen Luta, of Kealahou; Shannon McCandless, of Kamuela; Gene Tamashiro, of Hilo; Timothy Waugh, of Hilo; and Eric Weinert, of Papaikou.

### Prosecuting Attorney

Hawai'i County Prosecuting Attorney Mitch Roth, of Hilo, faces a challenge from Michael Kagami, of Kea'au.

Candidates, pg. 10



## HIGH SPEED INTERNET

Locally Owned and Operated  
Serving Kau for over 10 Years

Local Towers Feed Directly to  
Island Wide Fiber Optic Network



### Reliable Internet Service

99% Uptime. Not effected by weather clouds or rain. Always On.



### Always on Connection

You won't miss the sound of your modem. Just turn your computer on and go.



### Low Setup Fee

You don't buy any equipment so installation fees stay low.



### No Contracts

Month to month and Vacation plans available. We let the customer decide.



### Connect to the World

Communicate with people all over the world. Take college classes online.



### Work from Home

Transfer large files. Connect through VPNs to get your work done from home.



### Listen to Radio Stations

Enjoy unlimited radio channels and sites on the web, NPR, Pandora, iTunes, Spotify...



### Unlimited Data Plans

No data caps or downloading limits means you can stream all you want.



### Play Online Games

Low ping times means you won't get Frustrated due to lag. Don't get booted from another game.



### 24/7 Live Phone Support

Speak to a live person right away if you have questions about your account or need help with a technical issue.



Stop Waiting



Go With  
Broadband

Call Today For Your Free Consulation : 808.929.7668

Check our Website : [www.alohabroadband.com](http://www.alohabroadband.com)

**Raina WHITING**  
County Council District 6

[f](https://www.facebook.com/raina.whiting) [t](https://twitter.com/raina.whiting)

[www.voteraina.com](http://www.voteraina.com)

Paid for by Friends of Raina Whiting, PO Box 377534, Ocean View, HI 96737



# KA'U SPORTS REPORT

Volume 14, Number 6

The Good News of Ka'ū, Hawai'i

July 2016

## Rodeo, Gold Buckles Headline Independence Day Weekend

Ka'ū Roping & Riding Association hosts its annual Fourth of July Rodeo on Saturday and Sunday, July 2 and 3, with a slew of gold buckles for the winners sponsored by local businesses and community groups. The rodeo draws competitors to Ka'ū from all over the island and afar.

Ty Correa, Andrew Yanagi and Mario DeRago will be the bullfighters (formerly known as rodeo clowns). Emcee is Al Cabral. Food, T-shirts and other items will be sold to raise money to maintain the rodeo grounds. Cost to enter is \$7 presale and \$8 at the gate. Gate opens at 6 a.m. each morning. Slack roping starts at 8 a.m., and the rodeo starts at noon both days. To be announced is the rodeo queen. Kalia Andrade and Jamieann Losalio, both eight years of age, of Nā'ālehu, are finalists.

President of Ka'ū Roping & Riding Association is Ralph Ka'apana. Secretary is Jennifer Shibuya. Treasurer is Tammy Ka'apana. Barney Malicki is vice president.

Here are the events and their gold buckle sponsors:

The two winners of the Open Dally will each receive buckles sponsored by Miranda Country Store. Kane-Wahine Dally buckle

is sponsored by Robert Kawamoto and his Umi Ranch. Team 90s header buckle is sponsored by Ka'ū Andrade Contracting Inc. Healer buckle is sponsored by Steven and Phina Wroblewski.

Double Mugging buckles for the roper and mugger are sponsored by Edwin DeLuz Trucking. Kane-Wahine Ribbon Mugging buckles are sponsored by West Hawai'i Towing.

Wahine Mugging roper buckle is sponsored by Waimea Hill Country & Tack, Inc. Wahine Mugging mugger buckle is sponsored by Kenneth and Jonette Gaston of Slack Enterprises.

Po'o Wai U buckle is sponsored by Justie Mona Wroblewski. Tie Down Roping buckle is sponsored by Wally and M.J. Andrade with M.J. Ranch. Wahine Breakaway buckle is sponsored by Robert Kawamoto and his Umi Ranch.

Youth Barrels buckle is sponsored by Hana Hou Restaurant. The buckle for Dummy Roping for contestants four years of age and under is sponsored by Sherlene Rosario, of Pāhala Pops. Dummy roping buckle for contestants five to eight is sponsored by Patti Barry, of the Land Office real estate company.



Ka'ū Roping & Riding Association's annual Fourth of July Rodeo is on Saturday and Sunday, July 2 and 3.

Photo by Julia Neal

The buckle for Goat Undecorating, four years and under, is sponsored by Wayne Kawachi and 'O Ka'ū Kākou. For the five to eight years of age category, the sponsors are Carl and Amy Okuyama of Nā'ālehu 76. The Bull Riding buckle is sponsored

by Tammy and Ralph Ka'apana, of Four K Ranch. The All Around Buckle is sponsored by Ka'ū Roping and Riding Association. To donate and for more information, call Tammy Ka'apana at 929-8079.

## Top Ulua Weighs in at 117.2 lbs

Results are in for the annual Ulua Challenge. The cliffs of South Point are a popular location for the fishing contest each year, and competitors often camp there ahead of time to hold a place.

S. Tokunaga Store in Hilo sponsors the event, this year held the weekend of June 11 and 12.

In the Ulua Challenge, Austin Marsteller's 117.2-pound catch took first place. Second through 10th places went to John Branco at 105.9 pounds; Ryan Chow, 103.9; Bruce Tsubamoto, 99.1; Richard Kaiawe, 90.0; Jason Vierra, 77.3; Mitchell Izuno, 76.8; Brandon Uchida, 73.3; Chad



Kosinski, 71.6; and Scott Yamamoto, 62.4.

In the Omilu Division, first- and third-place winners used barbless hooks. First-through 10th place winners are Brienn Kiriara at 20 pounds; Dane Ramey, 19.7; Toni Salboro, 19.4; Brandon Lopes, 17.4; Waylen Towata, 17; Holi Correa, 16.9; David Llanes, 16.4; Louis Carreira,

16.1; Kiko Napeahi, 14.6; and Kemole Belanio, 14.6.

### HELCO, cont. from pg. 2

building the substation and transmission line. The reported cost of overhead transmission line is \$168,000, and cost of the substation is \$1.75 million.

"Ono delved deeper than HELCO's superficial assurances and is looking out for our interests," Ocean View resident Sandra Mayville said. "Judging by HELCO's answers, they don't like this."

"HELCO's answers clearly show that in this conflict of interest, it prefers to favor the developers as customers and not the rate-payers. For example, HELCO was originally going to locate the substation, which is being built to service the project, on developer-owned land. Then they switched to land owned by the Ranchos community that is being used for an office. Hawai'i Ranchos Road Maintenance Corp. refused to allow HELCO to subdivide their land, but HELCO ignored them."

"The Consumer Advocate is now asking HELCO to answer questions about the original site and cost of removing the substation after 20 years, and HELCO is baulking, saying, essentially, that the substation is not

HELCO, pg. 11

July, 2016 Page 5



**'16 NISSAN CREW CAB!**  
**FRONTIER SV 4X4**  
**SOLID TO THE CORE.**



32416 727656

Special financing available thru Kama'aina Nissan. Call for details.

**Buy It Now! \$31,040**

**\$245** \*PRICES PLUS TAX, LIC, \$245 DOC FEE, AND DEALER INSTALLED ITEMS. FINANCING O.A.C. REBATES AND INCENTIVES APPLIED TO SALE PRICE. OFFERS NOT COMBINABLE. VEHICLES NOT EXACTLY AS PICTURES AND ARE SUBJECT TO PRIOR SALE. SEE DEALER FOR COMPLETE DETAILS. SALE ENDS 7/31/16.



"Where We Make A Difference"

www.kamaainanissan.com

**930-6497**

471 Kalaniana'ole St.



### NOTICE OF INTENT AND PUBLIC MEETING

The Hawai'i County Economic Opportunity Council will file an application with the USDA Rural Development for financial assistance to purchase one mini-bus to provide essential transportation services to the residents of the Ka'ū District. A public meeting for comments will be held at 1 p.m. on Tuesday, July 5, 2016 at HCEOC Nā'ālehu Office, located on Puluala St., in the back of the Nā'ālehu Community Center to discuss the proposed project and to provide the opportunity for public comment.



# KA'Ū SCHOOL & YOUTH

## TAYLOR-BUILT



**CONSTRUCTION CO., INC.**  
**BC-18812**

General Contractor  
Certified Home Inspector  
Residential and Commercial

*Quality construction at affordable prices*

*New construction, remodels,  
re-roofing, concrete work*

**Call Bob @ (808) 929-8112**

Email: tbcci@hawaii.rr.com

Compost and Soil Mix Available

*"Serving the Big Island for over 27 years"*

Proud to support our Ka'u Trojans

## PUNALU'U BAKESHOP

Supporting the Youth of Ka'ū



*Home of the Famous Sweetbread*

**Open Daily 9am to 5pm**

**Gifts \* Lunches \* Snacks**

**Phone: 929-7343**

**www.punaluubakeshop.com**

*Pahala Plantation Cottages*

**Check out our Kamaaina Rates!**

**928-9811**

**SUPPORT LOCAL  
BUSINESSES!!**

**Tell them you saw their ad in  
The Ka'ū Calendar!**

## Kaulunani, DLNR Urge Cooling Schools with Trees

Plant trees to cool Ka'ū's and other schools. That's the advice of the Kaulunani Urban and Community Forestry Program and the state Department Division of Forestry and Wildlife, which are offering an opportunity for Hawai'i schools to help cool campuses and improve student's health and wellbeing as well as learning and behavior outcomes. The newly launched Cool Your School cost-share grant program offers funding for schools to plant trees on campus, with technical support on their care and maintenance.

With grading of land for the new community gym at Ka'ū High School, there will be open land for tree planting. While activity and locker rooms and offices at the gym will be air conditioned, the gym itself will have air-cleaning filtration but no air conditioning.

Classroom air temperatures have become a point of concern for teachers in Hawai'i, with some classroom temperatures reaching the high 90s. With proper planning, schools can make use of nature's own air conditioner—trees. Studies have shown that trees can cool a classroom by up to

10 degrees, according to Kaulunani. Trees block penetrating direct sunlight, reducing ambient temperatures, and the process of transpiration uses up solar energy that would otherwise heat the air. The calming effect of trees also promotes additional learning, behavioral and health benefits such as higher scores on standardized testing, fewer disciplinary problems, lower levels of stress, better concentration and fewer sick days.

Applications are being accepted on a rolling basis. The Kaulunani Council will review pre-proposals, and selected schools will be asked to submit a full proposal. Kaulunani staff will work with selected schools to assist with tree selection, locations for planting trees, cost estimates and preparation of the grant application.

For pre-proposal form and additional application information, see <http://dlnr.hawaii.gov/forestry/lap/kaulunani/grants/>.

For more information, contact Jolie Wanger at 808-395-7765 or [jwanger@smarttreespacific.com](mailto:jwanger@smarttreespacific.com).



Keiki are filling up the pool, taking classes in Pahala this summer with lifeguards Risa Martineau and Cassandra Beccia.

*Photo by Tanya Ibarra*

## Keiki Keep Cool & Learn to Swim

Pāhala Pool offers new Keiki Red Cross swim classes, Mondays through Fridays and on weekends in July. Most classes are full, but interested persons can call to be on a

waiting list.

A Level One class from 8:45 a.m. to 9:30 a.m. begins July 5 and wraps up July 15. A Preschool Aquatics class from 9:45 a.m. to 10:30 a.m. will also be offered July 5-15. From July 18-29, a Level Three class will be held from 8:45 a.m. to 9:30 a.m. and a Level Two class from 9:45 a.m. to 10:30 a.m.

Additional classes are held Sunday, Monday, Thursday, Friday and Saturday. One is a Level Four Class from 9:30 a.m. to 10:15 a.m., July 3-16 and a Level Five class July 17-30, 9:30 a.m. to 10:15 a.m.

Instructors are Rina Martineau and Cassandra Beccia.

Classes cost \$15 per child per two-week session. Call 928-8177.

Novice swim team sign-up and tryouts start Aug. 8 for ages 5-7. Interested youth and their parents can call Pāhala Pool at 928-8177.

## ROYAL HAWAIIAN ORCHARDS, LP

*"A Proud Sponsor!"*

P.O. Box 130

Pahala, HI

928-8383

**GO TROJANS!**



# EVENTS & ACTIVITIES

## Preregister for Seventh Annual Volcano Rain Forest Runs

Celebrating Hawai'i Volcanoes National Park's Centennial, the seventh annual Volcano Rain Forest Runs takes place in Volcano Village on Saturday, Aug. 20. Whether it's the Half Marathon, 10K or 5K you participate in, participants are guaranteed of being in one of the most unique and beautiful places on earth, running in Volcano's native rain forests. All runs start and finish at Cooper Center on Wright Road. The Half Marathon begins at 7 a.m., followed by the 10K at 7:45 a.m. and the 5K at 8 a.m.

Packet pick-up and late registration is Friday, Aug. 19 at Volcano Art Center in Volcano Village from 12 p.m. to 5 p.m. 10K and 5K participants can also register race morning at Cooper Center start line from 5:30 a.m. to 6:30 a.m. Special commemorative T-shirts are not guaranteed for late registrants, so register early. There is no race day registration for the Half Marathon.

Keiki ages 1-7 can register for the free 100- or 200-yard dash online or race morning until 9:30 a.m. The Keiki Runs, sponsored by Kilauea Lodge, begin at 10 a.m. All entrants receive a ribbon and other goodies after coming through the finish line. Everyone is a winner.

Volcano Rotary Club will be serving a BBQ Grill Lunch on race day from 9 a.m. to noon for \$9. There will be entertainment for everyone with juggling, face painting and bal-

loon animals, plus other craft booths, food booths, music and much more. "It all makes for a great family fun day," Race Director Sharron Faff said.

The Volcano Half Marathon is also the final event for the Big Island Half Marathon Triple Crown Series. All participants will have completed the Hilo, Kona and Volcano Half Marathons. And for the small, elite group who have completed three years of the series – The Triple, Triple Crown Awards.

Fees increase on Aug. 1, so sign up now for the lowest rates. Plus, participants get their name on a special towel that will be for sale at the event.

Parking is limited within Volcano Village, so arrive early and carpool. There are parking lots at Volcano Store and Thai Thai Restaurant. Parking lots are on Old Volcano Road and within walking distance of Cooper Center. Old Volcano Road through the village will close to vehicle traffic from 6:30 a.m. to 8:30 a.m.

Be sure to check out the maps for the events, as all participants are responsible for knowing their race route. "If you're not running or walking in one of the races, volunteer and have a great time supporting those that do," Faff said.

For more information, maps, FAQ's and registration information, call Race Director Sharron Faff at 967-8240 or see

[www.volcanorainforestruns.com](http://www.volcanorainforestruns.com).



Volcano Rain Forest Runs include events for all ages.

Photo from Sharron Faff



Billy Barnett, of Volcano, and Kathleen O'Neil, of Honolulu, won first places at both previous Volcano Rain Forest Runs.

Photo from Sharron Faff

### Barbless Hooks, cont. from pg. 1

research project, fishers used two poles; one with a barbed hook, the other with a barbless one. "We caught over 300 shoreline fish of many different kinds," Kawamoto said. "We looked at the catches, losses and misses, and statistically we couldn't tell the difference. Essentially you could catch just as many fish with a barbless circle hook."

Michael Tokunaga, organizer of the Tokunaga Ulua Challenge Fishing Tournament, regularly hosts DLNR outreach representatives from the Barbless Circle Hook Project. He said he would like to see acceptance of the barbless hooks for his tournament to grow to 75 percent or better. "This is for conservation and releasing unwanted catches," he said. "It's just a way of fishing smart. When you catch a fish, the hook is normally in the side of the mouth. The barb has nothing to do with it in my opinion."

After observing the Ulua Challenge last year and entering this year, Carlo Russo, of Pāhoa, fishes from the shoreline using barbless circle hooks exclusively. He said he feels there's absolutely no downside to using them. A few hours before the tournament weigh-in, fish-

ing with a friend on the edge of Hilo Bay, he said, "My experience with them has been 100 percent positive. I caught three papios, nice size papios, on them and didn't lose any fish. Popped them right out; all perfectly caught in the corner of their mouths." He also likes the fact that the barbless hooks keep bait fish alive longer because they make a smaller hole. "That's a really big plus," he said.

The outreach team from the project regularly attends fishing tournaments around the state to provide information, encouragement and free barbless circle hooks. "Since starting the project, I only use barbless hooks in my personal shoreline fishing, and I've caught all the same species," Kawamoto said. "I couldn't in good conscience ask fishermen to try something that I don't use or believe in myself. I have guys on every island who are only using barbless hooks, and they've seen it doesn't make a difference ... and allows the big one that got away ... to reproduce, to grow and possibly to be caught another day. This helps enhance the reputation of fishermen and women as practicing conservationists."

See S. Tokunaga Store on Facebook.

## Ka'u Andrade Contracting, Inc.

Land Clearing & Excavation

License No. C-15571 \* C-11607  
PUC 5133-C  
CALL WALLY



P.O. Box 74  
Na'alehu

Bus: (808) 929-7106  
Bus: (808) 929-7322

## KA'Ū AUTO REPAIR



YOUR ONE-STOP SHOP!!

U-HAUL

Available Here

INTERSTATE BATTERIES

Ka'alaiki Rd. in Nā'ālehu



TOW TRUCK SERVICE  
SAFETY INSPECTION

Station #500

929-9096. MOBILE 936-2272



PAHALA PLANTATION COTTAGES

VACATION RENTALS - NIGHTLY, WEEKLY OR MONTHLY  
1,2,3,4,7-BEDROOMS



Authentic Historic Homes  
from the Early 1900s  
1, 2, 3, 4 & 7 bedroom  
cottages & house

As seen in National Geographic Traveler & Keolu Magazines.  
Minutes from Pāhala Black Sand Beach & Volcanoes National Park.  
Destress, Conferences, Dinners, Workshops, Weddings Welcome.



928-9811 [mahalo@aloha.net](mailto:mahalo@aloha.net)  
[www.pahalaplantationcottages.com](http://www.pahalaplantationcottages.com)



# COMMUNITY CALENDAR

**Ka'ū & Kilauea Reflections**, daily (except July 4) through July 10, 10 a.m. – 3 p.m., Volcano Art Center in Volcano Village. Artwork by Dr. Douglas Davenport raises funds for Ka'ū Hospital Foundation. 967-8222

**Up Close**, daily through July 17, 9 a.m. – 5 p.m., Volcano Art Center Gallery in Hawai'i Volcanoes National Park. Marion Berger exhibits her paintings featuring portraits of Hawai'i's native birds. Free; park entrance fees apply.

**Centennial Hike: Kīpukapuauolu**, Sat, July 2, 9:30 a.m., Kīpukapuauolu trailhead in Hawai'i Volcanoes National Park. Dr. Rhonda Loh leads an easy 1.2-mile hike through the park's inaugural Special Ecological Area, a hot spot of biological diversity, with more native tree species per acre than any other forest in the park. [nps.gov/havo](http://nps.gov/havo)

**Nā'ālehu Independence Day Parade & Celebration**, Sat, July 2, 11 a.m., Nā'ālehu Park & Hwy 11. 'O Ka'ū Kākou sponsors the parade, activities, food & senior Bingo. 929-9872

**Ham Radio Operators Potluck Picnic**, Sun, July 3, Manukā Park. All American Radio Emergency Service members, anyone interested in learning how to operate a ham radio and families are invited to attend. Dennis Smith, 989-3028

**Beginning Hawaiian Language Classes**, Sun, July 3 & 17, 2:30 p.m., Ka'ū Youth Center near Nā'ālehu Community Center. Classes taught by kupuna Jeannette Howard are followed by informal kanikapila stressing songs of Ka'ū. Free; open to all. Beverly Byouk, 936-7262

**Live & Local Comedy**, Sun, July 3, 7 p.m., Pāhala Community Center. Featuring Augie T, Frank De Lima & Mel Cabang. For all ages. \$20 in advance, \$25 at the door. 990-0474 or AugieT.com

**Fourth of July Silent Auction**, Mon, July 4, 9 – 11:30 a.m., Cooper Center in Volcano Village. Tours, hotel stays, gift baskets, gift certificates & much more. Proceeds benefit Friends of Hawai'i Volcanoes National Park.

**Volcano Fourth of July Parade & Celebration**, Sat, July 4, Old Volcano Road & Cooper Center. Parade starts at 9 a.m. at the post office. Activities continue to 1 p.m.

**Ka'ū Coffee Growers Meeting**, Tue, July 5, 6 – 8 p.m., Pāhala Community Center.

**Fourth of July Breakfast Buffet**, Mon, 6 – 11 a.m., Kīlauea Military Camp's Crater Rim Café in Hawai'i Volcanoes National Park. Punalu'u Sweet Bread French Toast, Omelet Station, breakfast meats, breakfast potatoes

and more. Adults \$12; child 6-11 years old \$6. 967-8356. Open to authorized patrons and sponsored guests; 967-8371. Park entrance fees apply

**Kāpili Manu and Haku Hulu**, Wed, July 6, 10 a.m. – 12 p.m., Kīlauea Visitor Center lānai in Hawai'i Volcanoes National Park. Park Ranger Noah Gomes teaches about the historic art of catching beautiful and unique birds for featherwork. Create a small piece of featherwork for yourself. Free; park entrance fees apply.

**Hawai'i County Council Meetings**, Wed/Thu, July 6/7 & Mon/Tue, July 18/19. Ka'ū residents can participate via videoconferencing at Nā'ālehu State Office Building. See [hawaiicounty.gov](http://hawaiicounty.gov) for agendas & live-streamed & archived meetings.

**The Power of Soul**, Wed, July 6, 11 a.m., Pāhala Library & 2 p.m., Nā'ālehu Library. Pam Uyeunten explains how and why the soul can heal and share practices and techniques. 928-2015 or 939-2442.

**Ocean View Neighborhood Watch meeting**, Thu, July 7, 7 p.m., Ocean View Community Center. 939-2442 & 928-2015

**Dinner & Theater Night**, Fri/Sat, July 8/9, 15/16, 22 & 23, Kīlauea Military Camp's Crater Rim Café in Hawai'i Volcanoes National Park. Enjoy a casual dinner before KDEN's production of *The Music Man*. Open to authorized patrons and sponsored guests; 967-8371. Park entrance fees apply.

**The Music Man**, Fri/Sat, July 8/9, 15/16, 22/23, 7:30 p.m.; Sun, July 10, 17, 24, 2:30 p.m.; Kīlauea Theater in Hawai'i Volcanoes National Park. KDEN presents Meredith Willson's musical to celebrate its 14<sup>th</sup> birthday. \$15, \$12 seniors, \$10 children 10 and under. 982-7344, [kden73@aol.com](mailto:kden73@aol.com)

**Ka'ū Coast Cleanup**, Sat, July 9. Hawai'i Wildlife Fund staff and volunteers meet at 7:45 a.m. at Wai'ōhū Park to carpool to Kamilo. [kahakai.cleanup@gmail.com](mailto:kahakai.cleanup@gmail.com)

**Atlas Recycling at South Point U-Cart**, Sat, July 9, 9 a.m. – 1 p.m.

**Abstract Acrylics with Lisa Louise Adams**, Sat, July 9, 11 a.m. – 4 p.m., Volcano Art Center in Volcano Village. 967-8222

**Mongolian BBQ**, Sat, July 9, 5 – 8 p.m., Kīlauea Military Camp's Crater Rim Café in Hawai'i Volcanoes National Park; 967-8356. \$.85 per ounce includes rice and beverage. Open to authorized patrons & sponsored guests. Park entrance fees apply; 967-8371.

**Sunday Walk in the Park**, June 10, 10 a.m. – 1 p.m.,



Last year, Nā'ālehu Fourth of July Parade's first-ever Pā'ū Queen was Lorilee Lorenzo.

Photo by Peter Anderson

## Fourth Festivities in Nā'ālehu July 2

Pā'ū riders will again grace Hwy 11 during Nā'ālehu's Fourth of July Parade, along with school groups, nonprofits, motorcyclists, classic-car owners, businesses, politicians and more. The parade begins at 11 a.m. on Saturday, July 2 at Nā'ālehu

Elementary School and ends at Nā'ālehu Hongwanji Mission.

'O Ka'ū Kākou sponsors the parade and activities at Nā'ālehu Park, including keiki treats, bounce houses and senior Bingo and lunch.

Free; park entrance fees may apply.

**Kanaka Tree Performs**, Wed, July 20, 6:30 p.m., Kīlauea Visitor Center Auditorium in Hawai'i Volcanoes National Park. Kiliona Moku Young, T.R. Ireland, Kalei Young and the Young 'ohana blend the classic sounds of Hawaiian music with fresh rhythms and melodies. Free; park entrance fees apply.

**Family Reading Night**, Thu, July 21, 5 p.m., Ocean View Community Center. 939-7033

**Hawaiian Civic Club of Ka'ū**, Thu, July 21, 5:30 p.m. 929-9731 or 936-7262

**OVCA Board Meeting**, Thu, July 21, 6 p.m., Ocean View Community Center. 939-7033

**Volunteer Forest Restoration Project**, Fri, July 22, 8:30 a.m. – 1 p.m., Hawai'i Volcanoes National Park. Help remove invasive, non-native faya from an 'ōhi'a forest. Register by Mon, July 18 at [forest@fhvnp.org](mailto:forest@fhvnp.org).

**Endemic Understanding**, Sat, July 23 – Aug 27. 9 a.m. – 5 p.m., Volcano Art Center Gallery in Hawai'i Volcanoes National Park. Seven artists celebrate biodiversity found within Hawai'i Island's National Parks. Opening day reception 5 – 7 p.m. Free; park entrance fees apply.

**Philippine Consulate Mobile Team**, Sat, July 23, 8 a.m. – 5 p.m. & Sun, July 24, 8 a.m. – 12 p.m., Aupuni Center Conference Room in Hilo. Appointments recommended for services. 961-8220

**HOVE Road Maintenance board of directors meeting**, Tue, July 26, 10 a.m., St. Jude's Church. 929-9910

**Ka'ū Food Pantry**, Tue, July 26, 11 a.m. – 1 p.m., St. Jude's Episcopal Church in Ocean View.

**After Dark in the Park: Salt Production Sites**, Tue, July 26, 7 p.m., Kīlauea Visitor Center Auditorium in Hawai'i Volcanoes National Park. Archeologist Summer Roper reveals the importance and history of pa'akai along the park's rugged coastline. Free; park entrance fees apply.

**Ku'i Kalo – Pound Poi**, Wed, July 27, 10 a.m. – 12 p.m., Kīlauea Visitor Center lānai in Hawai'i Volcanoes National Park. Experience this nutritious and special food, the traditional staple of the Hawaiian diet. Free; park entrance fees apply.

**Ocean View Community Development Corp. meeting**, Fri, July 29, 5 p.m., Hawaiian Ranchos office.

**Salt Production Sites Hike**, Sat, July 30, 9 a.m., parking lot after Pu'u Loa Petroglyph Trailhead in Hawai'i Volcanoes National Park. Archeologist Summer Roper guides a two-mile roundtrip hike to the extensive remnants of pa'akai gathering sites along the coast and discusses how residents of this area used a unique method to extract the salt. Free; park entrance fees apply.

### EXERCISE & MEDITATION

**Pāhala Pool Schedule: Public Recreational Swim Mon – Fri 1 – 4:30 p.m.**, Sat/Sun 1 – 4 p.m.; Adult Lap Swim Mon – Sun 10:30 a.m. – 12 p.m. Closed Mon, June 11. 928-8177 or [hawaiicounty.gov/pr-recreation](http://hawaiicounty.gov/pr-recreation)

**Gentle Senior Yoga**, Mon/Wed, 2:30 – 4 p.m., Nā'ālehu Hongwanji. Senior price \$10 for 10 sessions. Stephanie Pepper, 937-7940

**Pilates Plus**, Mon/Wed, 4 – 5 p.m., Discovery Harbour

**KAU COFFEE MILL HAWAII**

**Buy Local for ALL your Gifts!**

*Relax in our outdoor sitting area and tour our mill & farm.*

96-2694 Wood Valley Road, Pāhala, Hawai'i

OPEN DAILY 8:30 A.M. TO 4:30 P.M.

**[www.kaucoffeemill.com](http://www.kaucoffeemill.com) • 928-0550**



# KA'Ū July 2016

Community Hall. Open to all ages. Exercise by DVD; bring your own equipment, ball and mat. Free w/donation of non-perishable food. Judy Knapp, 939-8149

**Zumba Fitness**, Mon/Thu, 5:30 p.m.; Sat, 9 a.m., New Hope Christian Fellowship in Volcano. Certified instructor Linda Fanene, 990-3835

**Zumba**, Mon/Thu, 6 – 7 p.m., Nā'ālehu Community Center. Certified Zumba instructor Erin Cole, 938-4037

**Aikido**, Mon/Wed, 6 p.m., Pāhala Hongwanji. Alan Moores, 928-0919 or [artbyalan2011@gmail.com](mailto:artbyalan2011@gmail.com)

**Beginning and Intermediate Yoga**, Tue/Thu, 8:30 - 10 a.m. Noa's Island Massage in rear entrance of Ka'ū Realty across from Hana Hou. Please come 10 minutes

11 a.m. – 1 p.m.; Uncle Sonny Wed/Sat, 1 – 5 p.m.; Tui Masani'ai Fri, 10 a.m. – 2 p.m.

**Volcano Farmers Market**, Sun, 6 – 10 a.m., Cooper Center. Fruits and veggies, swap meet and more. EBT welcome.

**Niaulani Nature Walks**, Mon, 9:30 a.m., Volcano Art Center in Volcano Village. This one-hour nature walk travels through a portion of old-growth Hawaiian rain forest on an easy, 1/7-mile loop trail. Free (calabash donations welcome). 967-8222 or [volcanoartcenter.org](http://volcanoartcenter.org)

**Folk & Country Music**, Mon/Wed, 10 a.m. – 1 p.m., Punalu'u Bake Shop. Gary Cole, aka Foggy, entertains diners.

**Pāhala Senior Center: Lunch served Mon – Fri**, 10:30 a.m. for residents aged 60+. Julie, 928-3101

**Nā'ālehu Senior Nutrition Center (Hawai'i County Nutrition Program)**, Lunch served Mon – Fri, 10:45 a.m. for residents aged 60+, greater Nā'ālehu area. 939-2505

**Ocean View Nutrition Site**, and Senior Club hosts activities at St. Jude's Church on Mon/Wed/Fri from 8:30 a.m. and provides lunches 11 a.m. – 12:30 p.m. for seniors 60+. Donations requested.

**Zhineng Qigong**, Mon, 2 – 4 p.m., Cooper Center in Volcano Village. \$10 suggested donation. [alohachigong@gmail.com](mailto:alohachigong@gmail.com)

**A Walk into the Past**, Tue, 10 a.m., 12 p.m. & 2 p.m., Kilauea Visitor Center and Whitney Vault in Hawai'i Volcanoes National Park. Ka'ū resident Dick Hershberger brings Hawaiian Volcano Observatory founder Thomas Jaggar to life.

**Knit-Wits**, Tue, 1 p.m., Ocean View Community Center. 929-7033

**Ka'ū Driver License Office**, Tue/Wed by appointment. 854-7214

**Family Movie Matinee**, Tue, 3 p.m., Nā'ālehu Public Library. Free movies plus free popcorn. 939-2442

**Family History/Genealogy Workshops**, Tue, 4 – 6 p.m., Nā'ālehu Mormon Church. Theresa Ducret presents free, online workshops. Appointments at 238-6221.

**Basic Computer & Internet Classes**, Tue, 5:30 & 6 p.m., Pāhala Public & School Library. Debbie, 928-2015

**Kanikapila Jam Sessions**, Tue, 5:30 – 7 p.m., Volcano Art Center in Volcano Village. 967-8222

**Ka'ū Farmers Market**, Wed, 8 a.m. – noon, Shaka's Restaurant in Nā'ālehu. Produce, Hawaiiana, arts and crafts, fresh baked goods.

**Nā'ālehu Market**, Wed/Sat, 6:30 a.m. – 2 p.m., Ace Hardware. Produce and locally made products.

**Community Bookstore**, Wed, 10 a.m. – 3 p.m. at Kauaha'ao Church in Wai'ōhinu. 938-0411

**Free Dinner**, Wed, 4 – 6 p.m., Ocean View Community Center. Bring a can; have a meal. Everyone welcome; volunteers needed. Donations accepted c/o OVCC. 939-7033

**Ka Lena Na Keiki O Ka'ū**, Wed, 4 – 6 p.m., Ocean View Community Center. Nonprofit Family Support Hawai'i sponsors this free talent group, with Chassie Cantiberos teaching song and dance. 430-7886

**Baptist Church Choir Practice**, Wed, 6 – 8 p.m., Ocean View Community Center. 939-7033

**Game Night**, Wed, 6:30 – 9 p.m., Discovery Harbour Community Hall. Fun games & great conversation. Open to the public. Potluck first Wednesday of each month begins at 5:30 p.m.; bring a favorite dish for six. Sheri, 929-9258

**Ka Lae Quilters**, Thu, 10 a.m. – 2 p.m., Discovery Harbour Community Center. 238-0505

**VA Center for Veterans**, Thu, 10 a.m. – 1 p.m., Ocean View Community Center. David, 329-0574

**Color Me Happy**, Thu, 3 – 6 p.m., Nā'ālehu Library. Coloring club for all ages. 939-2442

**Desperately Seeking Serenity AFG meeting**, Thu, 5 p.m., St. Jude's Episcopal Church in Ocean View. Sandy, 557-9847

**Bruce Lee Combatives**, Thu, 5 – 6 p.m., Discovery Harbour Community Center. Henry Ivy's family-based classes teach self-confidence and personal development. 854-5284

**Women, Infant, Children Services**, Fri (except holidays) at various locations. 965-3030 or 934-3209

**Aloha Fridays**, 11 a.m. – 1 p.m., Volcano Art Center Gallery porch at Hawai'i Volcanoes National Park. Variable hula art offerings. Everyone welcome. Free; donations welcome; park entrance fees apply.

**Art Fridays**, 1:30 – 2:30 p.m., Kahuku Park. For ages 5 – 12. 929-9113

**Ka'ū 'Ohana Band Rehearsals**, Fri, 4 p.m., St. Jude's Church in Ocean View. Instruments provided; no experience necessary. Ka'ū School of the Arts, 854-1540 or [info@kauarts.org](mailto:info@kauarts.org)

**Kilauea Lū'au Dinner Buffet & Hula Show**, Fri, 5 – 8 p.m., Kilauea Military Camp's Crater Rim Café & Lava Lounge in Hawai'i Volcanoes National Park. 967-8356. Free hula show July 1, 8 & 29. Open to authorized patrons and sponsored guests. Park entrance fees apply. 967-8371

**Live Entertainment at Hana Hou Restaurant**, Fri, 5:30 p.m. in Nā'ālehu. 929-9717

**Live Music Fridays at South Side Shaka's**, Nā'ālehu. 929-7404

**Ocean View Farmers Market**, Sat, 7 a.m. – noon, Pōhue Plaza.

**Alcoholics Anonymous meetings: One Day at a Time Group**, Sat, 6:30 p.m., Cooper Center; Friday Night BBQ Meeting, Fri, 5 p.m., Wai'ōhinu (929 -7674); Happy, Joyous and Free Group, Mon/Thu, 7 p.m. and Sat, 5 p.m., St. Jude's in Ocean View. West Hawai'i Intergroup (329-1212) or the Hilo office (961-6133)



Emergency vehicles join Volcano Village's Fourth of July Parade, with operators waving to the crowd and sounding sirens. *Photo by Julia Neal*

## Volcano Celebrates on July 4

Volcano Village always holds its Fourth of July Parade and Celebration on the holiday, which this year falls on a Monday. The parade begins at 9 a.m. at the post office and travels down Old Volcano Road, turning left on Wright Road and ending at Cooper Center. Food, crafts, entertainment and fun for the entire family continue there until 1 p.m., rain or shine.

early. \$10 a class or \$80 for 10 classes. 756-3183

**Belly Dance Classes**, Tue; beginners, 5:30 p.m.; intermediate, 6:30 p.m. Farasha, 990-3835

**Karate**, Tue/Fri, Pāhala Community Center. Cliff Field, 333-1567

**Self-Guided Yoga**, Wed, 9:30 – 11 a.m., Cooper Center, Volcano. Calabash donations. Debra Serrao, 985-7545

**Meditation**, Wed, 4 – 5 p.m. Nā'ālehu Hongwanji. Velvet Replogle, 936-8989

**Beginners Yoga**, Wed, 5:30 – 7 p.m., Volcano Art Center in Volcano Village. \$5. Rob Kennedy, 985-9151

**Qigong Classes**, Thu, 9 – 10:30 a.m., Mark Twain Estates near Kama'oa Rd. Learn Primordial Qigong (Hunryuan Gong), healing walk for balance, crane animal frolic for asthma and strengthening the lungs, along with other easy-to-learn self-care practices that balance the body for health and vitality. Beginners always welcome; Sliding donation \$5 - \$10. Shary, 929-7647

**Country Line Dancing**, Thu, 6:30 – 7:30 p.m., Discovery Harbour Community Hall. For men & women; no partner required. Free & easy lessons (a new dance each week) for beginners & intermediate. Suzanne, 930-4678

### DAILY & WEEKLY EVENTS & ACTIVITIES

**Punalu'u Bake Shop Music Lineup: Richard Zazzi** Mon, 9 a.m. – 1 p.m.; Gary Cole, aka Foggy, Wed/Sat,

## ✓ VOTE RICHARD CREAGAN

### for STATE HOUSE DISTRICT 5

## MY ENDORSEMENTS:

I proudly support our economy, health care, our schools, our unions, and our environment. I am proud to be endorsed by:

To find out more about me and my positions on the issues please visit:

## Creagan.org

Paid for by the Friends of Creagan, PO Box 189, Naalehu, HI 96772

# HAPPY 4th of JULY!!

## RICHARD ONISHI

STATE HOUSE DISTRICT 3®

"Working for our communities."

Paid for by Friends for Richard Onishi, 2040 Ainaola Place, Hilo, Hawaii 96720

## KONA KA'Ū REALTY

Tom & Myriam Edwards

Phone: 808-937-6534

Email: [T3@Aloha.net](mailto:T3@Aloha.net)

Search our Hawai'i MLS at:

## www.konakau.com



# NŪPEPA NĀ'ĀLEHU

Volume 14, Number 6

The Good News of Ka'ū, Hawai'i

July 2016

## Ka'ū Learning Academy: Expand Grades, Upgrade Admin

Ka'ū Learning Academy plans to upgrade its administrative functions, now that it heads toward its second year with the proposed addition of seventh-grade classes. The public charter school invites third-through seventh-graders to enroll. The addition of seventh grade is on the agenda of the Windward Planning Commission meet-

ing to be held on Thursday, July 7 at Aupuni Center in Hilo.

The application asks for a special permit to increase enrollment from 65 students to 100 students with facility improvements. Location of the school is the former Discovery Harbour Golf Course clubhouse on 3.69 acres of land within the state Agricultural District. Joe Iacuzzo, managing director of the school, said that the school "had a very successful first year." He noted that Roy, of Wong Yuen Store, said the other day, "I am seeing these same kids that I have been seeing, and they look like they have life back in their eyes" since starting to attend Ka'ū Learning Academy.

"Parents are telling us that children are not only learning more. They enjoy going to school," said Iacuzzo.

Iacuzzo said that the first year was focused on acquiring the teaching staff, refining the curriculum, the permitting and licensing and setting up the campus. A story in *Hawai'i Tribune-Herald* reported on administrative issues reviewed during a state-wide Charter School Commission meeting in Honolulu in June. Regarding statements that school payroll had been late on some occasions, Iacuzzo said the school uses a payroll service and is never late in submitting its payroll information to the company. However, on one occasion when a teacher was ill, the payroll was sent to the payroll company on time but delayed in reaching the Charter School administration, he said. "The staff was always paid on time the exact day they were supposed to be paid," said Iacuzzo. Regarding concerns on whether any employees lost health insurance for a time, Iacuzzo said the situation involved a new teacher who was to pay her own insurance for the first month of work until the school health insurance kicked in. The late payment that cancelled the insurance did not involve the school, he said, stating that KLA always submitted its payments for the health insurance on time.

According to the *Tribune-Herald* story, union dues payments were delayed. About halfway through the school year, Iacuzzo said, KLA learned that union dues were the

only deductions not taken out through the Charter School Commission administration and corrected the procedure as soon as it was known. Also regarding administration, KLA missed a May 27 deadline to submit a plan to correct issues, the story reported. "As a result, the commission will issue a 'notice of deficiency' to Ka'ū Learning Academy and continue monitoring its finances," the *Tribune-Herald* reported. Iacuzzo said a preliminary report with a request for clarifying information needed was sent on time, followed by the final report.

According to the *Tribune-Herald* story, Iacuzzo told the commission by phone, "As you all know, this was our first foray into administration of a school, and we had a really steep learning curve despite experience we have had in the past."

For more about the school, see [kaulearning.com](http://kaulearning.com). Also see [hawaii-tribune-herald.com](http://hawaii-tribune-herald.com).

**Candidates, cont. from pg. 4**

### State Senate

In state Senate District Two, Democratic Sen. Russell Ruderman, of Kea'au, who covers East Ka'ū into Puna, faces challenges from Hawai'i County Council member and Democrat Greggor Ilagan, of Kea'au, and Libertarian Fred Fogel, of Volcano Village.

East Ka'ū into Kona Sen. Josh Green's office is not on the ballot this year.

### State House

Three candidates are running for Ka'ū Democratic state Rep. Richard Onishi's office in District Three, which covers East Ka'ū. Challengers are Libertarian Gregory Arianoff, Democrat Ainoa Naniolo and Green Party candidate Kealoha Pisciotto, a Native Hawaiian opponent to the Thirty Meter Telescope. All four candidates are from Hilo.

Ka'ū's state District Five Rep. Richard Creagan, of Nā'ālehu, who represents West Ka'ū into South Kona, is opposed by Michael Last, also of Nā'ālehu.

### U.S. Senate

U.S. Sen. Brian Schatz faces several challengers. He is the only U.S. senator from Hawai'i in the running this year, as Sen. Mazie Hirono is up for re-election in 2018. Schatz competitors in the Democratic Party are Makani Christensen, Tutz Honeychurch, Arturo Reyes and Miles Shiratori. Challengers in Republican Party are John Carroll, Karla Gottschalk, Eddie Pirkowski and John Roco. Others running against him are Liber-

**Candidates, pg. 13**  
The Ka'ū Calendar

**76 Union 76 Wiki Wiki Mart**  
Station opens daily 5 a.m. to 11 p.m.

- Hot dogs, Sandwiches, Heat & Serve Entrees
- Bulk Costco Foods
- Beer & Wine
- Propane, 10 a.m. - 6 p.m. Daily

Visit Wiki Wiki Mart on Facebook

929-7135 • In Nā'ālehu on Hwy 11  
Next to Naalehu Park towards Hilo

**MIRANDA'S FARM**  
An Award Winning Ka'ū Coffee  
[www.Mirandasfarm.com](http://www.Mirandasfarm.com)  
Ocean View Farmers Market on Saturdays  
Flyin' Hawaiian in Nā'ālehu, Mon, Wed, Sat  
[mirandasfarm@yahoo.com](mailto:mirandasfarm@yahoo.com)  
808-333-4333, 929-7572

**B&E PROPANE**

OPEN DAILY 9 AM - 5 PM  
LOCATED ON MELIA ST.  
IN NĀ'ĀLEHU  
ALSO AVAILABLE  
WELDING & FABRICATION  
(808) 896-0841

Ka'ū Auto Repair  
Cable Vision  
3D Welding & Fabrication  
B & E PROPANE  
Melia St.  
The Gas Company  
ACE Hardware  
Punalu'u Bakery  
Ka'alaiki Road  
Mamalahoa Highway

**High quality, affordable health care.**  
(Now that's a good prescription.)

We offer comprehensive primary medical, dental, and behavioral health care to meet your needs at every stage of life.

**KA'Ū FAMILY HEALTH AND DENTAL CENTER**

**MEDICAL STAFF**  
Diana Jeannotte, MD  
Debra Barra, LCSW

**MEDICAL Hours of Operation**  
Monday through Friday  
7:30 AM to 5:30 PM

**DENTAL Hours of Operation**  
Tuesdays & Thursdays  
8:30 AM to 4:30 PM

For an appointment, call 929-7311

95-5583 Mamalahoa Hwy.  
[bayclinic.org](http://bayclinic.org)

**KAI ROBSON RS**  
**KA'Ū REALTY**

Contact Kai Robson RS at  
Cell 808-989-4464 & visit him at  
Ka'ū Realty in Downtown Nā'ālehu.  
[krobson123@gmail.com](mailto:krobson123@gmail.com)

**Kama'aina Kuts Salon**  
Corrine  
Owner/Stylist  
For an appointment, call  
939-7099

LOCATED IN NĀ'ĀLEHU  
BEHIND ACE HARDWARE



# KAHUKU TO MILOLI

Volume 14, Number 6

The Good News of Ka'ū, Hawai'i

July 2016

## Governor Ige Releases Funds for More Ocean View Water

More water is on its way to Ocean View. Gov. David Ige released \$725,000 in capital improvement budget funds to finance plans and designs to develop a secondary Hawai'i County potable water source there.

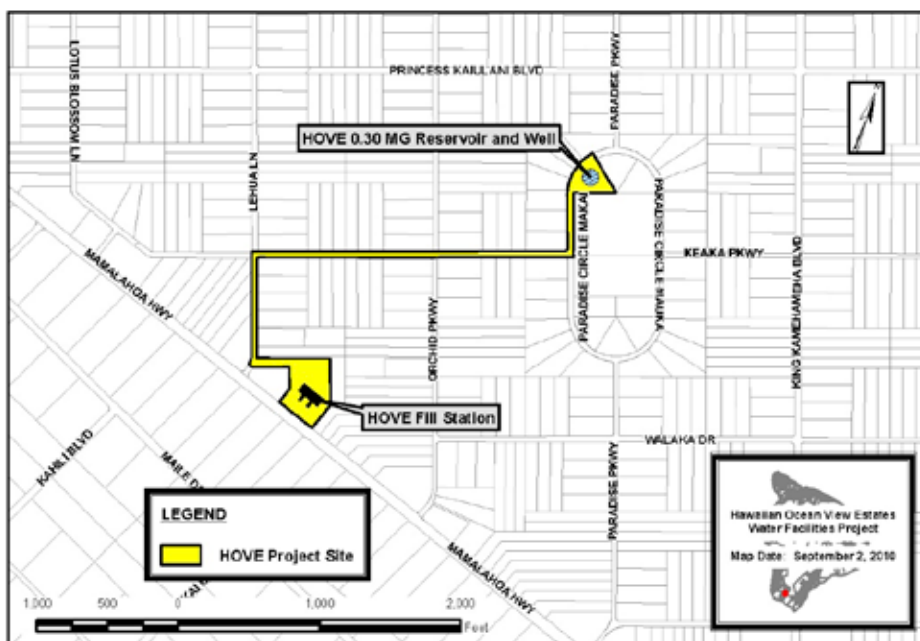
"The release of the money for a second source and the willingness of the Water Department to agree to use it is very important," Creagan said. "An ample and secure source (sources really) of water for Ocean View

"Mahalo a nui loa Gov. Ige, Rep. Creagan and Sen. (Josh) Green for your support of this very important CIP funding for our Hawaiian Ocean View Community," Hawai'i County Council member Maile David said. "I also want to aloha and mahalo Mayor Kenoi; Keith Okamoto, Manager, Chief Engineer for the Department of Water Supply; Warren Lee, Director of Public Works; and their awesome staff who worked so diligently to timely submit the necessary request for allocation to Gov. Ige and the state Finance Department.

"I am humbled to have been a part of a very positive and successful

multi-agency collaborative effort and look forward to our continuing relationship."

Green said he was very pleased for the community. "Good work on your part, Maile, and mahalo to the administrations."



A second well to join current infrastructure, shown here, will help Ocean View's water supply become more secure.  
*Photo from Hawai'i County*

"Projects such as these are critical components of the public infrastructure and contribute to building a better home for our kupuna, keiki and all the residents of Hawai'i," Ige wrote in a letter to Ka'ū's state Rep. Richard Creagan announcing the action. "By working collaboratively, we can climb the mountains of challenges that face Hawai'i."

**HELCO, cont. from pg. 5**

a part of their transmission line application and should not be discussed. Excuse me. We have to live with this. Of course it should be discussed.

"Why should HELCO decide that the ugly substation must be in the most conspicuous site? Why not use the developer's land, where it can be hidden in the middle of three acres of trees? Whose side is HELCO on?"

Mats Fogelvik, President of HRRMC, also commented on HELCO's replies: "Why, when the CA asks questions about the cost of undergrounding the transmission line and maintaining the undergrounded transmission line, does HELCO fatuously answer that they don't know? Why can't they look it up?"

is a health and safety issue. The mosquito, dengue and zika problem is water-related, and having another reliable and high quality source of water may help people find solutions to mosquitoes breeding in catchment tanks. The need for a public restroom at the highway intersection and restaurant area is critical and should be helped by a second source of water."

There must be lots of technical information on the Internet on this subject. Why not ask a  
*HELCO, pg. 13*

*Wai Moku*  
WATER DELIVERY

**CALL RUDY**  
**929-9222**

All Work Guaranteed - Towing Service Available - We service Trucks and 4x4s - State Safety Checks - Master Technician RD#3789

**AutoTech**  
**SOUTH KONA'S AUTO REPAIR CENTER**

- Advanced Computer Diagnostics
- Air Conditioning
- Brakes
- Clutch and Exhaust System
- State Safety Inspections
- Oil Changes
- Suspension
- Wheel Alignment

81-981 Halekū'i St.  
Kealahou, HI 96750

**322-8881**

VISA, MasterCard, American Express, Discover, AutoCare Center, ASE

**BJ'S EXCAVATION & HAULING**

**PH.808 333-0789**  
PUC 5238-C

### NEED WATER? WE DO WATER HAULING

- Specializing In:
- \*Water
  - \*House Pads
  - \*Septic Systems
  - \*Trenching
  - \*Rock Wall
  - \*Demo
  - \*Driveway
  - \*Lowboy
  - \*Dump Truck
  - \*Coffee Farm
  - \*Bulldozing
  - \*Free Estimates

### Propane

929-9666

### South Point U-Card Inc.

**Hours**

7:30 - 5:00, M - F  
Sat. 8:00 - 12:00, Closed Sun.

- Hawaiian cement
- Redi-mix concrete
- Rebar #3#4#5
- Wire 6x6x10x10
- Sand #4 (for water tanks)
- Rock #3
- ¾ minus base coarse
- Cinders, red & black
- Pier blocks, misc. concrete prods.

### Construction Equipment Rental

- Compactors
- Cement finishing
- Generators
- Scaffolding
- Ladders
- Pressure washer
- Compressors
- Painting equipment
- Floor finishing equipment
- Welding equipment
- Automotive equipment
- Cordless hand tools
- Tools
- Power tools
- Hand tools
- Trailers
- String trimmer
- Chainsaws (we sharpen)
- Lawn mower
- Party equipment

### Small Engine Sales & Service

**AUTHORIZED DEALER, PARTS AND SERVICE:** Shindaiwa, Wacker, Titan, airless, Echo, Honda Engines, Snapper, Goldblatt, Briggs & Stratton, and Grimmer Schmidt

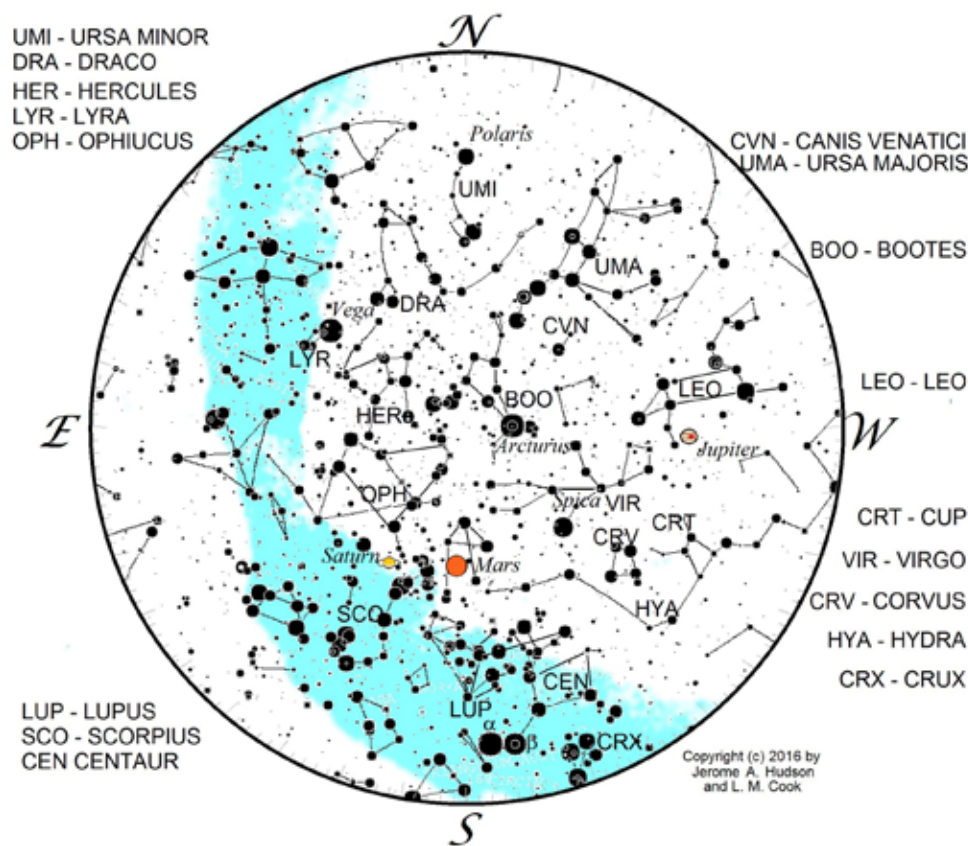
**USED MOTOR OIL DROP OFF:** 10-gallon limit per visit for Do-It-Yourself oil changers. Must log in during open hours only (no charge).

Hawaiian Ocean View Ranchos • Below gas station  
P.O. Box 6182, Ocean View, HI 96737 • Stan and Marianne Troeller, Proprietors

**SERVING THE KA'U AREA OVER 25 YEARS**







The star chart is produced from a sky Atlas program written by Jerry Hudson, who has given us permission to publish it. Thanks, Jerry!

The constellations are presented with their three-letter abbreviations, with (usually) the Latin names shown in the margins. Stars as faint as magnitude-six are shown. This is done to take advantage of the truly dark skies Ka'ū is blessed with when there is no bright moon and the skies are clear of fog.

# Stars over Ka'ū - July 2016

by Lew Cook

Jupiter sets soon after chart time, 10 p.m. on the 15th (and an hour later early in the month, and an hour earlier late in the month).

Brilliant Mars continues to highlight the July sky, and Saturn keeps it company. Early in the month look at Mars, then to the left is Saturn. South of Saturn, you will see a red star, about the same color as Mars. In fact, the name of that star, Antares, comes from the Greek, and it means "equal to Mars." In color, of course ... and sometimes in apparent brightness (but not lately). There, the similarity stops.

While Mars is a planet shining by reflecting the sun's rays, Antares is a star. A whopper of a star! It started out life as a normal, bright star, but it passed through that phase of its existence long, long ago. Now, it has swelled up so much that if it were our sun, its surface would extend into the asteroid belt, past the orbit of Mars. We'd be toast ... at least until we vaporized out of existence!

Someday Antares will become a supernova, when the hydrogen and helium (and all the other elements lighter than iron) are eaten by the nuclear fusion process. Then it will have an iron core but nothing producing heat to support the star's other gases (at the temperature of a star's interior, even iron is a gas). It will collapse upon itself and instantly blast itself apart. It will appear so bright that it will cast shadows at night and will be visible in the daytime.

Again this month we'll follow the moon as it tours around the night sky. The moon goes around the sky every month and can be used to highlight stars and planets

around the zodiac. Let's follow it, paying attention also to what is happening off of the ecliptic. We begin this tour at 8 p.m. on the evening of July 8 as the sky is becoming dark. The thin crescent moon is quite close to the planet Jupiter. By the time the moon sets, the separation between Jupiter and the moon will be less than two degrees.

Three nights later (July 11), it will be five degrees north of Spica, Virgo's brightest star, having reached First Quarter phase around the time it rose. The next night, the 12th, it is due south of Arcturus, also known as Hokulea. It will be north of Centaurus, who by now has driven his spear deep into the wolf, Lupus, whose tongue by now is hanging out, indicating it is dead!

On the 14th, the moon, with the shape of a lemon, completes a keystone shaped form with Saturn on the eastern corner, Mars to the west, Antares on the south and the moon on the northwest corner. Antares is the brightest star in Scorpius.

You need a fog-free sky to see the rest of the stars of Scorpius clearly if the moon is shining brightly, as it is on the 14th through the 23rd, when it rises after 10 p.m. Scorpius is a beautiful grouping of stars that does look just like a scorpion - or Maui's fish hook.

The night of the 16th finds the moon forming a right triangle with Altair (above and a bit east of the moon) and Vega, the fifth brightest star in the sky, far north of the moon. It is far north of the moon but is high in the northern sky. From the moon, look northeast about 44 degrees until you get to a bright white star, Altair. From there, let your gaze turn right, look beyond Altair 34 degrees until you reach blue Vega. Vega is

the star that was featured in the movie *Contact*, in which there was supposed to be a planet where the plans for "The Machine" were beamed to Earth from. It allowed an earthling to travel and visit there for a very brief time. The whole trip lasted only a few seconds. Science fiction, to say the least!

Fridays Sunrise and Sunset times:

Date	Sunrise	Sunset
July 1	5:48 a.m.	7:04 p.m.
July 8	5:50 a.m.	7:04 p.m.
July 15	5:53 a.m.	7:03 p.m.
July 22	5:55 a.m.	7:01 p.m.
July 30	5:58 a.m.	6:58 p.m.

**Chinese Investments cont. from pg. 12**

nese investment in the late 1980s and early 1990s that was more commonly known as the Japanese bubble."

"Similar to the Japanese investors of 25 years ago, the Chinese investors entering the Hawai'i market are targeting hotels, golf courses and, now, development sites that may include residential subdivisions," *PBN* reported.

The story by Duane Shimogawa says, "There are three main reasons why Hawai'i should expect to see more real estate investments by the Chinese, including the loosening of visa restrictions, increased airlift and the emergence of the middle and upper classes in China."

Manny Mendez, who works in China, specializing in Hawai'i-China business, told

**Music Festival, cont. from pg. 3**

Philharmonia, Munich Chamber Orchestra, Indianapolis Symphony Orchestra and the Cincinnati Symphony Orchestra, among others. In 2015, he performed Brahms' *Violin Concerto* on a tour to Spain with the Konzerthausorchester Berlin under Dimitri Kitajenko, a performance highly acclaimed by the audience and press.

Daniel Lechuk is the Assistant Principal Cellist of the Louisiana Philharmonic Orchestra and holds the same position with the New Orleans Opera Association.

Described by *The Washington Post* as a "dazzling virtuoso," he is the recipient of an award from the Angela Prokopp Foundation of the Vienna Philharmonic Orchestra. Having played throughout North America, the Middle East, Asia and Europe, he was invited as visiting cellist with the Qatar Philharmonic Orchestra in Doha and also performed as principal cello at the Royal Opera House Muscat (Oman) with the Castleton Opera.

Kwan Yi has been praised by audiences and critics alike as a pianist of "lyrical elegance" and "ravishing, pitch-perfect clarity." He has performed throughout the United States, Europe and Asia in such ven-

**Turtles Nesting, cont. from pg. 1**

or in the water, remember to view sea turtles from a distance of 10 feet. Give turtles space, and don't feed, chase or touch them. Hawaiian honu bask on the beach. This is normal behavior. Don't try to push them back into the water.

"It's OK to help!" Fishermen should check gear often, use barbless circle hooks and adhere to state gillnet rules. If safe for

**Moon Phases**

	Moon Rise	Moon Set
<b>New Moon</b>		
<b>July 04</b>	6:11 a.m.	7:31 p.m.
<b>First Quarter</b>		
<b>July 11</b>	12:22 p.m.	12:26 a.m.*
<b>Full Moon</b>		
<b>July 19</b>	7:02 p.m.	6:40 a.m.*
<b>Last Quarter</b>		
<b>July 26</b>	12:38 a.m.	12:26 p.m.*

\*The next morning

Shimogawa, "You can get a 10-year tourist visa with no problem, and you can get a five-year student visa. You have airlift now. There are three airlines that offer nonstop flights from Hawai'i to China - China Airlines, China Eastern Airlines and Hawaiian Airlines. Then there's that robust middle-class society, and those people are traveling to Hawai'i and the rest of the United States. These are three big game-changers."

*PBN* pointed out that Chinese investment in U.S. businesses over the past three years has "created more than 35,000 jobs, according to U.S. Citizenship and Immigration Services. It is considered another reason for the influx of Chinese investments. China accounts for 85 percent of the EB-5 visas issued."

See more at [bizjournals.com/pacific](http://bizjournals.com/pacific).

ues as Carnegie Hall, Lincoln Center, Kimmel Center, Kennedy Center, Chicago Symphony Center, the Metropolitan and Isabella Stewart Gardner Museums, Jordan Hall, Jones Hall, Mann Performing Arts Center, Wolf Trap National Park for the Performing Arts, Library of Congress, Kravis Center of the Arts, Großer Sendesaal des Hessischen Rundfunks, Auditorium du Louvre, Suntory Hall and Seoul Arts Center.

Among his many awards are top prizes in the Sendai International Piano Competition in Japan and the Trio di Trieste International Chamber Music Competition in Italy. In recent seasons, Yi has appeared as a soloist with the Russian National Orchestra, Houston Symphony Orchestra and the Brevard Festival Orchestra.

The concert will also feature up-and-coming young artist, Canadian Soprano Mikayla Sager, who has been described as "impressive" and as possessing a voice that is "pure, lyrical and soaring."

For more, see [himusicfestival.com](http://himusicfestival.com).

Festival Artistic Program Director is Carlin Ma. Shoremount Obra said she is also a talented photographer and will be chronicling the entire festival via photography and a blog."

both the fisher and the turtle, release an accidentally caught turtle by reeling it in carefully, holding by its shell or flippers, cutting line as close to the hook as possible and releasing with no (or little) gear or line attached. Barbed hooks may cause more damage by trying to remove them rather than leaving them in place.

"No white light at night." Use wildlife

**Turtles Nesting, pg. 15**



# KEEPING HEALTHY IN KA'Ū

Volume 14, Number 6

A Journal of Good Health, Food and Fitness

July, 2016

## Tropic Care Completes Another Ka'ū Tour of Duty

More than 900 Ka'ū residents and others took advantage of free health care during Tropic Care 2016. It was the second time the Army Innovative Readiness Training mission brought trainees to the remote district. It previously set up camp in June 2013.

Army Reserve personnel saw 506 residents at Ka'ū High School and 423 at Ocean View Community Center between Tuesday, May 31 and Saturday, June 4. Ka'ū residents received free medical screenings, school sports physicals, dental services, eye exams, hearing screenings, nutritional services, veteran services, prescription eyeglasses and

more. The most used services were vision, dental and medical.

Of the total, 305 live in Pāhala, 175 in Nā'ālehu and 269 in Ocean View. Others came from South Kona, Volcano and other parts of the island.

Tropic Care reported that those who visited Ka'ū High School saved \$25,774 in health care costs, while in Ocean View they saved \$15,477.

Sponsors included Ka'ū Rural Health Community Association, County of Hawai'i and Hawai'i Department of Health.



Tropic Care Army Reserve personnel completed another Ka'ū tour of duty in June.

Photo from Jessie Marques/Ka'ū Rural Health Community Association, Inc.

## Quit with Help from Bay Clinic

Bay Clinic's Tobacco Cessation Program received \$225,000 from Hawai'i Community Foundation's Hawai'i Tobacco and Control Trust Fund.

"The program is a great support system for people who want to start living a smoke-free lifestyle," Bay Clinic CEO Harold Wallace said.

Participants get comprehensive support through individual and group counseling sessions, pharmacotherapy options and other services to help them succeed.

Bay Clinic urges its patients to discuss



the program with their health care provider and those who are not patients to ask their provider for a referral.

For more information, call coordinator Mealani Rahmer at 313-2765.

### HELCO, cont. from pg. 11

consultant? It seems like they are not willing to lift a finger if it means their customers, the solar developers, may have to pay more."

Linda Raquinio said, "I applaud Mr. Ono for asking about the cost of removing the solar installations and restoring the housing lots to where they could be used for homes – which is what the subdivision was created for.

"Look at the South Point windmills fiasco. How long were tourists forced to tolerate that rusty, decrepit eyesore? Is this what we want for our neighborhood?"

Raquinio referred to the now defunct Kama'oa Wind Farm off South Point Road. Thirty-seven windmills were installed in about 1987, then slowly deteriorated and by 2006 were completely defunct. They were not taken down until 2012 and are now stored on the site, awaiting removal.

"Too often in Hawai'i, a project with a limited life is installed with no thought as to who will remove it when its useful life is over," Raquinio said. "I support Ono's forward thinking. If HELCO is not going to restore the sites, who will?"

"We know the developers plan to flip the project as soon as it is built – they have said so in a press release – and who knows how many times it will be sold and to whom. Going in, the developer needs to set aside the cost of disposing of 30,000 solar panels and restoring the sites.

"If it costs \$6 to dispose of a tire – and all they do is cut it up – what will it cost to responsibly dispose of a solar panel? The CA The Ka'ū Calendar

is absolutely correct to ask these questions. HELCO is shirking its kuleana. I really hope the PUC does not let them get away with it."

The CA's Statement of Position was due to be filed on June 29.

Ka'ū residents continue to write letters protesting the project to the Public Utilities Commission.

"The high voltage line must be undergrounded, no matter the cost," wrote Kerstin Mueller, a Ranchos resident, in a letter to the PUC docket that was set up in response to HELCO's application for an overhead transmission line. "The developer is being paid top dollar for the power. This solar project does not belong in a residential community. It is not needed and not wanted and is being put up just for an overseas company (SPI Solar is incorporated in the Cayman Islands and headquartered in Shanghai, China) against the wishes of the community. The properties all along the highway in Ocean View will soon be zoned 'commercial,' which means that businesses like shops, restaurants, hotels, schools, professional offices, banks, etc. could be located here one day. Nobody will want to spend money putting up a nice commercial building if it looks onto ugly poles and an unsightly substation. This will have a very negative effect on the development of our town in the short and long term."

A Miloli'i resident, Susan Zimdas, questioned the state law that allows solar installations to be build on agricultural land without a county permit. "I am against solar in a residential area!" she wrote. "This is ag-land. Not industrial!"

### Candidates, cont. from pg. 10

tarian Michael Kokoski, Joy Allison of the Constitution Party and John Giuffre of the American Shopping Party.

Schatz, 43, became senator in December of 2012, appointed by Gov. Neil Abercrombie after the death of U.S. Sen. Daniel Inouye. In a 2014 special election, Schatz was elected to continue.

John Carroll, one of the Republican contenders, an 86-year-old attorney who owns a Hamakua farm, held a press conference in Honolulu.

According to a report in the *Honolulu Star-Advertiser*, Carroll is "known for his outspoken opposition to the Jones Act, a post-World War I law that requires all shipping between U.S. ports be conducted with domestic vessels and crews. Carroll argues that the federal law has led to Hawai'i's high shipping costs.

"Carroll denounced Hawai'i's high shipping costs, the soaring price tag of the Honolulu rail project, Hawai'i's high cost of living and the state's slow pace in moving qualified

Referring to a 1.25-megawatt solar installation near Miloli'i that came on line in October 2015, Zimdas wrote: "Solar City got away with building 27 acres of solar on ag-land. How is this O.K.? I cannot build a store or restaurant, but you will let someone come in and cut down 27 acres of trees and put in solar with no notice to the residents neighboring this land."

In June, letters were sent to the PUC by Ron Riggs (four letters), Nancy Bondurant, Diane Neufeld-Heck, Joan Sevey, Kerstin Mueller, Susan Zimdas and Ross Metzger.

The PUC accepts public comments at *HELCO*, pg. PB

Native Hawaiians onto homesteads," the story stated.

### U.S. House

U.S. Rep. Tulsi Gabbard, who serves Ka'ū and rural areas of the state, faces challenges in the upcoming elections. Challenging her in the Second Congressional District race is Democrat Shay Chan Hodges. Republicans against Gabbard are Eric Hafner and Angela Aulani Kaaihue. Nonpartisan Richard Turner is also running.

Gabbard, 35, defeated former Honolulu Mayor Mufi Hannemann in 2012. She campaigns for the Bernie Sanders movement and frequently appears on national TV as a veteran commenting on foreign policy.

Democratic challenger Hughes contends that Gabbard is not a true progressive, scoring an F in the Progressive Punch ratings, compared to Schatz and Hirono each earning an A.

**KA'Ū HOSPITAL**

The Ka'ū Hospital is a critical access hospital with acute and long-term care.

x-ray

24 hr emergency department

lab

family practice rural health clinic

Clinic Hours:  
\*\*Now on Thursday, too\*\*  
Monday-Friday, 8 a.m. - 4:45 p.m.  
To make an appointment at the clinic, call  
**932-4205**  
To contact the hospital, call  
**932-4200**  
**Corner of Hwy 11 & Kamani St. in Pāhala**



### GREAT Primary Care for the Community!

Our clinic cares for patients from *keiki* to *kupuna*. We offer preventive health services and chronic disease management. In addition, we provide some specialized services, including implantable birth control devices.

**For an appointment, call 932-4205.**

*Paid for by Ka'ū Hospital Rural Health Clinic located at 1 Kamani Street in Pāhala.*



# KAPEPA VOLCANO

Volume 14, Number 6

The Good News of Ka'ū, Hawai'i

July 2016

## Plans Approved as Hawai'i Volcanoes Enters Next 100 Years

The Record of Decision approving Hawai'i Volcanoes National Park's Abbreviated Final General Management Plan/Wilderness Study/Environmental Impact Statement was signed into approval on May 24, the park announced in June. The plan provides long-term management guidance about the preservation and use of the national treasure, UNESCO World Heritage Site and International Biosphere Reserve.

"Having a comprehensive plan to guide management decisions as we enter our next 100 years is an important step in protecting Hawai'i Volcanoes National Park for future

generations," said Park Superintendent Cindy Orlando.

While work may start on some plan elements, Orlando said implementing the plan will not happen all at once. "It's likely to take many years, as funds and resources become available," she said.

Over the past several years, many people have participated in the



Hawai'i Volcanoes National Park's general management plan, wilderness study and environmental impact statement have been approved.

Photo from Final GMP/WS/EIS

planning process through public meetings and formal comments received via mail, comment forms and website forums. The National Park Service released the Draft GMP/WS/EIS in May 2015 and the Abbreviated Final GMP/WS/EIS in March 2016. The approved plan is identified as the "selected action" in the ROD and as the "NPS preferred alternative" in the Final GMP/WS/EIS. The

ROD includes a description of the selected action, synopses of other alternatives considered, the basis for the decision, a description of the environmentally preferable alternative, a summary description of measures designed to minimize environmental harm and an overview of public involvement in the decision-making process.

The Record of Decision and related General Management Plan documents can be viewed at

<http://parkplanning.nps.gov/havogmp>.

## KDEN Celebrates 14th Birthday During Rehearsal for *The Music Man*

Kīlauea Drama & Entertainment Network celebrated its 14th birthday on June 9. The celebration was held at a dance rehearsal for their annual summer musical, Meredith Willson's *The Music Man*. Founded in 2002 by experienced community theater organizers and performing artists, KDEN's mission is to provide and promote top-quality community theater in East Hawai'i, seeking to enrich and unite the community through participation in the performing arts. To date, KDEN has produced a 25 shows as well as a Living History

program in Hawai'i Volcanoes National Park. KDEN is also working on a show to celebrate the centennial of its performing home, Kīlauea Military Camp.

*The Music Man* follows fast-talking traveling salesman Harold Hill, who poses as a band organizer and leader and sells band instruments and uniforms to the naive Iowa townsfolk, promising to train members of the new band. But Hill is no musician and plans to skip town without giving any music lessons. His plans are foiled when he falls for

Marian the librarian. Musical favorites include *Seventy-six Trombones*, *Trouble, 'Til There Was You* and *Gary, Indiana*.

A cast of 36 theater veterans and newcomers is lead by Scott Wuscher as Harold Hill and Alyssa Ishihara as Marian Paroo. Stephen Bond plays Marcellus, Hill's old friend who has settled in River City and has started a new life with his girlfriend, Ethel Toffelmeir, played by Hayley Pereira. The

Paroo family also includes Stephanie Becher as Mrs. Paroo and Hayden Konanui-Tucker as Winthrop. Mayor Shinn is Steve Peyton, with Terry Sever as his wife, Eulalie and Samantha Saiki and Fiona Broward as his daughters, Zaneeta and Gracie. Chanan Lopez plays Zaneeta's love interest, Tommy Dijilas. School board members who are the Barber-shop Quartet are Joy Sever, Joel Kelley, Dick Hershberger and Michael Kingston. Kelley's daughter Ariana plays Amaryllis. The Pick-a-little ladies are Asia Helfrich, Carolyn Lee and Helie Rock. Bill Chikasuye is the anvil salesman, Charlie Cowell. Others in the

cast include Sawyer Becher, Kaulima Boyer, Kamaile Carvalho, Raina Dale, Gordon and Gracelyn Greenlaw, Susie Halemano, Jalen Hook, Katie Kluzak, Joe Miyazaki, Kathy Mulliken, Dawn Pelletier, Deakon Temple, Briana Tucker-Archie, Coral Walker and Elizabeth Young. They are led by director Suzi Bond, music director Chris Tomich and choreographer Rachel Klein. Jonathan Sudler is the set designer.

Performances of *The Music Man* are Fridays, Saturdays



The cast of *The Music Man* celebrated KDEN's 14th birthday last month.  
Photo from KDEN

**VOLCANO ART CENTER**

WHERE PEOPLE, ART AND NATURE MEET

**July Events**

🌀 **Gallery Events** 🌀

*Up Close:* Marian Berger, continues through 7/17

*Endemic Understanding* Opens July 23rd  
Opening reception 5pm - 7pm

7/20 'Alalā Mask Making 11:00am - 1:00pm

*Aloha Fridays on the Porch*

🌀 **Hula Arts July 16** 🌀

*Hula Kahiko* with Kumu hula Kaho'okele  
Crabbe with Hālau Ola o Ka Lani

*Nā Mea Hula* with Loke Kamanu and 'ohana

🌀 **Niaulani Campus** 🌀

6/25 - 7/10 *Ka'ū and Kilauea Reflections*

7/9 Abstract Acrylics

7/14 Presentation: *Reconstructing Kaluapele*

7/14 Japanese Woodblock Printing

7/15 *Quilts in the Forest/Quilts in the Park*  
Opening Reception 5pm-7pm

7/16 Quilting Workshops

7/16 Zentangle: Scratchboard

7/25 Film: *The Art of Quilting*

Call 967-8222 or visit  
[www.VolcanoArtCenter.org](http://www.VolcanoArtCenter.org)

**KILAUEA LODGE**  
Volcano Village • 967-7366

Breakfast & Lunch Daily • Sunday Brunch  
Dinner Nightly ~ reservations recommended  
Romantic Rooms • Gift Shop  
Gift Certificates  
[www.kilauealodge.com](http://www.kilauealodge.com)

**Friends of Hawai'i Volcanoes National Park - Hawai'i Volcanoes Institute presents**

SUNDAY WALK IN THE PARK	JULY 4TH SILENT AUCTION FUNDRAISER	VOLUNTEER FOREST RESTORATION PROJECT
<p>Sunday, July 10 10:00 AM to 1:00 PM</p> <p>This monthly program on second Sundays is aimed at bringing together the members of the Friends to share in the park's beautiful trails.</p> <p>This month's walk explores Pu'u Huluhulu led by Ab Valencia. Walk through this dynamic lava landscape and climb this magnificent forested hill and more.</p> <p>"Sunday Walk in the Park" is free for Friends members, and non-members are welcome to join our non-profit organization in order to attend. To register, email <a href="mailto:admin@fhvnp.org">admin@fhvnp.org</a> or visit our website <a href="http://www.fhvnp.org">www.fhvnp.org</a>.</p>	<p>Monday, July 4 9:00 AM to 11:30 AM</p> <p>The Friends annual fundraiser is a much anticipated part of Volcano Village's popular 4th of July parade and festival. The auction is held inside the Cooper Center's main hall.</p> <p>Auction items include two seats on the Circle of Fire &amp; Waterfalls tour provided by Blue Hawaiian Helicopters, Body Glove adventures, one and two night accommodations at many area B&amp;B's and hotels including a 2 night stay at the Hilo Hawaiian Hotel, Volcano Lodge, Rainforest Retreat and more. Yoga and Acupuncture, gift baskets full of goodies, a membership to Imiloa and many other wonderful items.</p> <p>There are also retail gift certificates for Kilauea Lodge, Punahoa Bake Shop, Mauna Lani Bay Terrace Sandy Crab Feast, among others. Original art, photography, prints, jewelry, crafts, books, CDs, pottery, plants, and more make up the diverse array of goods and services up for bid. Join us for this fun family event, as there is bound to be an item for everyone.</p> <p>The proceeds benefit Friends of Hawai'i Volcanoes National Park, a non-profit 501(c)(3) organization.</p> <p>LET'S CELEBRATE July 4 and our beloved Park!</p>	<p>Friday, July 22 8:30 AM to 1:00 PM</p> <p>This month we will be removing invasive, non-native faya plants in an area of cinderly soil. Most of the faya will be ones that have grown since we worked in the area last year. This is a wonderful 'ohi'a forest with a nice variety of native understory plants. We'll also learn about the park's native forest restoration and invasive plant control programs.</p> <p>Our goal is a crew of 14 people. Registration is required. To volunteer, email: <a href="mailto:forest@fhvnp.org">forest@fhvnp.org</a> or call Mark Johnson at (808) 961-5012 by Monday evening, July 18.</p>
<p>PO Box 653 • Volcano, HI 96785      985-7373 • <a href="http://WWW.FHVNP.ORG">WWW.FHVNP.ORG</a></p>		

Kilauea Drama Entertainment Network Presents

**MEREDITH WILLSON'S**

**THE MUSIC MAN**

**KMC'S KILAUEA THEATRE**  
July 8 - 24, 2016  
Fridays and Saturdays 7:30 pm  
Sundays 2:30 pm  
Tickets: \$15 General,  
\$12 Seniors/60+ & Students,  
\$10 Children 12 & under  
Tickets available at Kilauea General Store,  
Kea'au Natural Foods,  
The Most Irresistible Shop and at the door  
For reservations and more information call  
982-7344 or email [kden73@aol.com](mailto:kden73@aol.com)

and Sundays from July 8 through July 24 at KMC's Kīlauea Theater. Showtimes are Fridays and Saturdays at 7:30 p.m. and Sundays at 2:30 p.m. Tickets are \$15 general admission, \$12 for seniors and students and \$10 for children 12 and under. Pre-sale tickets are available at Kīlauea General Store, Kea'au Natural Foods and The Most Irresistible Shop in Hilo. Tickets are also available at the door. For more information, call 982-7344 or email [kden73@aol.com](mailto:kden73@aol.com).



# ENERGY & SUSTAINABILITY IN KA'Ū

Volume 14, Number 6

The Good News of Ka'ū, Hawai'i

July 2016



✓ VOTE AUGUST 9TH

## MAILE MEDEIROS DAVID

### EXPERIENCE COUNCIL DISTRICT 6 & ALOHA

#### MY COMMITMENT TO YOU:

- I will continue to be your voice on the County Council.
- I will keep an open door, and listen to your needs.
- My experience and Aloha will bring unity in addressing issues and finding fair solutions
- I will continue to support and fund projects that benefit our rural communities

#### I HAVE:

- Deep roots in Hawai'i's culture and traditions
- Won legal cases protecting & preserving cultural and natural resources
- A proven track record in community advocacy
- Experience in various levels of the Legislative Branch of the County

#### COMMITTED TO UNITY IN HELPING OUR COMMUNITY

[www.mailedavid.com](http://www.mailedavid.com)

PAID FOR BY THE COMMITTEE TO ELECT MAILE DAVID • 88-4310 WAMALANOA HWY., CAPTAIN COOK, HI 96704

## THE KA'Ū CLASSIFIED

#### COMMUNICATIONS, COMPUTERS

GOT CABLE? Why Settle! The Satellite Guy offers dish network anywhere on the Big Island. More channels, more choices, less money. Available where cable is not. The Satellite Guy. 929-9103.

#### HOME, RANCH & BUSINESS

PLUMBING CONTRACTOR - License # C-26521, Mark Berkich Plumbing, 936-7778. Custom work, New and remodel.

Water delivery call Rudy at Wai Moku Deliveries 929-9222

#### FOR SALE

Macnut, Husk, Both Fresh and composted. Red and Dirty Cinders. Soil Mix. Delivered to your property. Bob Taylor 929-8112, 936-8623.

#### SERVICES AVAILABLE

House/Pet Sitter available for days, weeks or months in the Kau district. I respect and appreciate caring for your sacred space and beloved pets. Call/text Robin @ 808.741.6730

#### Turtles Nesting, cont. from pg. 12

friendly lighting near the coast (yellow/amber and shielded lights). Don't use flash photography, and keep lights and beach fires to a minimum from May to December, when turtles are nesting and hatchlings are emerging.

Avoid beach driving. Off-road vehicles crush nests, create tire ruts that trap hatchlings and degrade habitats. Driving on the beach is also illegal in most areas.

Prevent debris and rubbish from entering the ocean. Participate in beach and reef cleanup activities.

Report all hawksbill sea turtle sightings, any nesting activity (turtle tracks or nest digging) and injured or dead turtles to NOAA's Sea Turtle Stranding Hotline at 286-4359 in Hilo or 327-6226 in South Kona.



Honu 'ea hatchlings march to their ocean home.

Photo by Dave Berry

Report illegal or suspicious activity that may result in turtle injury or death to Division of Conservation and Resources Enforcement at 808-587-0077 or 643-DLNR. An animal that appears to be sleeping on the beach may be a basking turtle and should be allowed to rest undisturbed. However, if an animal in distress – with visible signs of injury, bleeding or entanglement in debris – or one that has not moved for more than two days, it may need assistance. Call the hotline numbers listed above to report an animal in distress.

For more tips to prevent or reduce the potential for interactions, search online for Fishing Around Sea Turtles.

For more, see <http://dlnr.hawaii.gov/>.

### Recycle Used Motor Oil

FREE

#### YEAR-ROUND USED OIL COLLECTION FOR RESIDENTS

(10 gallon limit)

#### Pacific Customs, LLC

16-180 Mikahala Rd., Bldg. Shipman Industrial Park, Kapa'au

989-3437 • Mon – Fri, 9 AM – 3 PM

#### South Point U-Cart

Prince Kuhio St., Ocean View

929-9666 • Mon – Fri, 7:30 AM – 5 PM

Sat 7:30 AM – 12 PM

ACCEPTABLE MATERIAL: Used motor oil, gear oil, shock oil, hydraulic oil, transmission oil and diesel.

UNACCEPTABLE MATERIALS: Gasoline, water, brake fluid, solvents, thinners, paints, antifreeze, anything mixed with oil. Do not use BLEACH, ANTIFREEZE or PESTICIDE containers!

\*Unacceptable materials may be disposed of at County of Hawai'i Household Hazardous Waste collections.

### Recycle Hawaii

For more information, visit  
[www.recyclehawaii.org](http://www.recyclehawaii.org)

A cooperative project by Recycle Hawaii, County of Hawai'i Dept of Environmental Management, State of Hawai'i Dept of Health and private businesses on the Big Island.



### Ka'ū Farmer's Market

Wednesdays & Saturdays, 8am-12pm  
In front of Shaka's Restaurant

#### Kuahiwi Ranch Natural Beef

Ka'ū-grown free-range, pasture-raised, no antibiotics or artificial hormones. Pre-orders call 936-1898

Vendors call

339-1032

In operation since December 5, 2001  
Brought to you by Nā'ālehu Main

Street

[naalehu.org](http://naalehu.org)

### NĀ'ĀLEHU MARKET

Wednesdays & Saturdays, 8am-2pm  
In front of ACE Hardware in Nā'ālehu

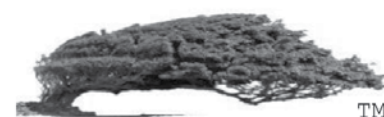
#### Pacific Quest

Organic fruits & vegetables grown by youth. Proceeds donated to our Ka'ū community!

Vendors email

[richwitt1@hotmail.com](mailto:richwitt1@hotmail.com)

# Tawhiri Power LLC



## Bringing *CLEAN* renewable energy to Hawaii

see us at [www.tawhiri.com](http://www.tawhiri.com)



*Photo by Pamela Taylor*