



Area Superintendent Chad Keone Farias gave the inspirational address and took this photo.

Ka'ū Seniors Resilient, Graduate

More than 40 seniors graduated from Ka'ū High School. During ceremonies on Friday, May 21, Principal Sharon Beck said that during the pandemic, the students "have shown such resilience, strength to finish their education and will continue their education... They really persevered through this time." She told the graduating seniors, "It was a hard struggle, so I want to thank you guys."

Area Superintendent for East Hawai'i, Chad Keone Farias, called the Ka'ū Class of 2021, "the most resilient class I have

seen in my 30 years in education." He quoted the "late, great Kobe Bryant who said that the most important thing to do is to inspire people so that they be great in whatever they want to do." Farias talked about his generation - the millions of Gen X's born between the mid 1960s and early 80s. He said the stereotypes of Gen X's are they are self-reliant, resourceful and independent, "since we had to care for ourselves at an early age. We like to overcome challenges on our own and we know how to balance work and family. My generation grew up with the birth of the cell phones and the internet."

He asked if the Ka'ū graduates understood themselves
Ka'ū Graduation, pg. 3



Valedictorian Stormy Petitt, see her message on page 16.
Photo by Julia Neal

THE KA'Ū CALENDAR

Volume 19, Number 6 The Good News of Ka'ū, Hawai'i June 2021

1st Lady Visits, Helps Launch Ka'ū Global Learning Lab

Dawn Ige, First Lady of Hawai'i and wife to Gov. David Ige, visited Ka'ū High & Pāhala Elementary on Friday, May 28, in particular to see the progress on the new school farm and learning academy that will be embedded in the school this Fall semester. The student-directed, career-oriented Ka'ū Global Learning Lab, led by Principal Sharon Beck and director 'Aina Akamu, will begin with ninth and tenth grade students Aug. 3 and expand into other grades.

Learning will center around agriculture and will involve science, technology, math, communication, culinary and other required high school level disciplines. The approach will be to allow each student to set a program, such as launching a product

that comes out of agriculture, to include branding and marketing.

The principal said, "It was an honor to share our students, school and community with First Lady Ige. She toured our campus and heard from students about their current and future learning. We traveled to St. Jude's church to hear about the amazing programs they are providing to the Ocean View community."

Ige and staff also visited Nā'ālehu Food Hub where she picked a cucumber from the community garden. The First Lady chairs the Ka'ū Global Learning Lab Advisory Board.

Community opportunities at the Learning Lab include volunteering and learning at the monthly Saturday school farm day; sponsoring mentoring and internships; giving talks, hosting students to visit a site of business, and donating materials, labor and money.

The next farm day for the community will be Saturday, June 19 featuring Lew Nakamura, professor of agriculture at Hawai'i Community College in Hilo. He will show participants how to build and take home a hydroponic plant growing system.

Nakamura has been working with Akamu and Beck to provide college level courses for Ka'ū High students to give them a head start when entering college and university. Nakamura's presentation will be at 8:30 a.m. with farm work beginning at 10:30 a.m.



First Lady Dawn Ige picks a cucumber from the community garden at the Na'ālehu Hub.
Photo by Maddie Stark



First Lady of Hawai'i Dawn Ige, fourth from right in front row, visited the new farm at Ka'ū High & Pāhala Elementary on May 28 and met with students, Principal Sharon Beck (left), program director 'Aina Akamu (second from left) and other school staff, accompanied by area Superintendent Chad Keone Farias (back row).
Photo by Otis Salmo

Dawn Ige Inspires Kaukau 4 Keiki in Ka'ū

Hawai'i's First Lady Dawn Ige and Ka'ū High & Pāhala Elementary Principal Sharon Beck are partners in Kaukau 4 Keiki, the summer program that will provide meals to students.

When Ige visited the Pāhala campus in May, she discussed the initiative. Beck said that she and Ige visited the Vibrant Hawai'i hubs where Kaukau 4 Keiki will supply box food to families who register on their website. "I am so appreciative of the First Lady taking the time to visit and see the beauty of Ka'ū and its community, while also learning about our challenges," said the principal.

In addition to Vibrant Hawai'i and its Pāhala and Nā'ālehu Food Hubs, local partners for Kaukau 4 Keiki include

County of Hawai'i, Hawai'i Child Nutrition Programs, Hawai'i Public Health Institute, Hawai'i Food Service Alliance, and state Department of Health, as well as Suisan Co., Ltd. and Hawai'i Food Bank. See <https://www.kaukau4keiki.org/home>

Sign up for teens and keiki 18 and under at <http://docs.google.com/forms/d/e/1FAIpQLSdT9ANc1ZfTMLlyqOwngujPNM8z9e1BEhVjLIP1WT0NEuRBXQ/viewform>.

The weekly meal kit includes food for seven breakfasts and seven lunches. A sample food kit includes four to five pounds of fresh fruits; four to five pounds of fresh vegetables; one loaf of bread; shelf-stable protein and shelf-stable milk.

Sen. San Buenaventura Reports on 2021 Hawai'i Legislature

East Ka'ū's state Senator Joy San Buenaventura, who also represents Puna, came out with her summary of achievements last month at the close of the 2021 Hawai'i State Legislature. She pointed to priorities aligning with the Senate's commitment to the Legislative Program set forth at the start of the 2021 session.

The 2021 Senate Legislative Program focuses on ten of 178 Sustainable Development Goals "that provide a framework for improving the quality of life now and for future generations," writes San Buenaventura. "Among the most significant measures that passed this session was HB200 HD1 SD1 CD1, the State Budget. This measure provides \$14.926 billion in general funds, \$1.352 billion in federal aid from the American Rescue Plan and \$31.17 billion through all methods of funding for the fiscal biennium beginning July 1, 2021, and ending June 30, 2023."

Included in the budget is \$31,035,000 for cash support for child care, \$14,300,000 for continued homeless services, \$2,594,198 for the Early College Program and \$5,400,000 for additional funding for General Assistance payments for temporarily disabled individuals.

According to San Buenaventura, other important bills approved by the Legislature

that are in alignment with the Senate's priorities are:

Good Health & Well-Being: SB936 SD2 HD1 CD1 (Brennan's Bill) authorizes the Department of Health to disseminate information on seizure first aid. SB970 SD2 HD2 authorizes the establishment of a physician-patient relationship via a telehealth interaction if the physician is licensed to practice medicine in the State. Buenaventura calls it, "A first step towards ensuring insurance payment for telehealth post-pandemic." HB723 HD1 SD2 CD1 authorizes use of rainy day funds for the purchase and distribution of personal protective equipment and industrial hygiene products to state departments and attached agencies.

Quality Education: HB613 HD2 SD2 CD2 allocates monies received by the state from the Elementary and Secondary School Emergency Relief Fund and the
Buenaventura Report, pg. 14



The Hawai'i Legislature set a goal of at least 30 percent of food served in schools and other state venues, to be sourced locally. Ka'ū High is starting a new school farm, with community volunteer days.
Photo by Julia Neal

PRSRT STD
US POSTAGE
PAID
PAHALA, HI
PERMIT NO.1

****ECRWSS
Postal Boxholder

Also in this issue:

P2 Business * P3 Pāhala * P4 Star Map *
P5 Sports Report * P6-7 School & Youth
* P8-9 Community Calendar * P10
Nā'ālehu * P11 Kahuku to Miloli'i * P12
Energy & Sustainability * P13 Health *
P14 Volcano

KA'Ū BUSINESS, REAL ESTATE

Volume 19, Number 6

The Good News of Ka'ū, Hawai'i

June 2021

CU Hawaii Gives Back on Member Appreciation Day

CU Hawaii Federal Credit Union, the not-for-profit financial institution, celebrated its Member Appreciation Day last month with cash prize drawings, member gifts and lunches for its six branches, in-

cluding Nā'ālehu.

Along with cooler bags and "lunch on us" vouchers, members who visited branches had the opportunity to enter for the cash prize drawings. The Nā'ālehu

branch presented the \$1,000 cash grand prize to Kaohinani Mokuahali and the \$200 cash prize to Antoni Ponce.

"In previous years we've provided bentos and last year's event was cancelled due to COVID," says Mark Peters, Nā'ālehu Branch Manager. "This year, we wanted to provide lunches but with a whole new approach," Peters added. With COVID and food handling safety as CU Hawaii's top priority, the branch partnered with Hana Hou Restaurant to provide "lunch on us" vouchers.

Patty McTighe-Fujimoto, co-owner of Hana Hou, said, "It was a great opportunity to partner with CU Hawaii for this year's Member Appreciation Day."

About CU Hawaii FCU: For over 65 years, CU Hawaii is a member-owned, not-for-profit cooperative financial institution. That means the profits are given back to the membership through competitive rates, lower fees and free services. Today, CU Hawaii has over \$350 million in assets with over 28,000 in membership and eight branches serving the Hawai'i island.



Erin Santos, Operations Supervisor, welcomes new member Brianna Siegman with Member Appreciation Day's cooler bag.

CU Hawaii photo



CU Hawaii staff Mark Peters, Erin Santos, Janessa Jara and Rienadan Kaupu with Kaohinani Mokuahali (center) winning the \$1,000 grand prize.

CU Hawaii photo



Pattie McTighe-Fujimoto, co-owner of Hana Hou Restaurant, welcomes all CU Hawaii members who received a "lunch on us" voucher.

CU Hawaii photo



Rienadan Kaupu, Member Service Representative, hands over a cooler bag to Tristan White.

CU Hawaii photo



CU Hawaii's Ka'ū Manager Mark Peters cheers on Antoni Ponce, the \$200 cash prize winner.

CU Hawaii photo.

The WAY to all your Big Island Real Estate Needs!



Francis B. McClelland (Mack), RB
Office: 808-315-5343
Fax: 888-612-6929
P.O. Box 104
Naalehu HI 96772
mack717@hawaii.rr.com



CAMINO PROPERTIES
www.CaminoProperties.com

Agricultural Thefts Prompt Ownership & Movement Crackdown

Increasing reports of agricultural theft has sparked Hawai'i Police Department to remind the public of regulations on transporting ag products. "If you sell any amount of an agricultural commodity that is to be marketed for commercial purposes; or transport agricultural commodities weighing more than 200 pounds or the value is \$100.00 or more, an Ownership & Movement Certificate is required." Proof of ownership is the first step in establishing a paper trail to help deter agricultural theft. If an inspector or law enforcement officer has probable cause to believe agricultural commodities are in unlawful possession, the inspector or law enforcement officer may request proof of ownership of the commodities, which could lead to the seizure of agricultural commodities and criminal penalties. Failure to comply with these requirements could result in criminal offenses to include a class C Felony."

For more information and details on the regulation of farm produce, contact the Hawai'i Department of Agriculture. Police ask anyone with

any information about agricultural thefts to call the Police Department's non-emergency line at 935-3311 or Lieutenant William Derr of the Community Policing Section at (808) 961-2350 or via email at william.derr@hawaiicounty.gov.

Ready to Sell?
www.LisaEdwardsRealtor.com

Proudly Serving Ka'ū in the Real Estate Industry for 28 Years.




Lisa Edwards, RS 64191
808-785-2912 Lisa@lisaedwardsrealtor.com
Kona Homes RB-20158. 75-5995 Kuakini Hwy #521 Kailua-Kona, HI 96740

Call for Comps!

Solarman Islandwide service Big Island, Hawai'i
Complete Solar Services
Established 1988

MOST EXPERIENCED SOLAR TECHNICIANS IN THE STATE:
OUTBACK FACTORY TRAINED AND CERTIFIED.

Office: 808-982-5708 Cell: 808-313-0608
consultdougnow@gmail.com
www.solarmanhawaii.com

Island Builders 
808-870-5425

New Construction, Remodels, Repairs, Decks, Fences

Insurance Bid
islandbuildershawaii@gmail.com
BC25562 Since 1979 Mike Susak

THE KA'Ū CALENDAR

The Good News of Ka'ū
June 2021, Vol. 19, No. 6
The Ka'ū Calendar
P.O. Box 940, Pāhala, HI 96777
Phone: 808-928-6471
www.kaucalendar.com
Publisher & Editor: Julia Neal, mahalo@aloha.net
Design/Production: Tanya Ibarra
Calendar: kaucalendarnews@gmail.com

Associate Editor: Nālani Parlin
Contributors: Lew Cook, Ann Bosted, Peter Anderson
For advertising, contact:
Nālani Parlin at 808-217-6893,
kaucalendar@gmail.com,
or kaucalendarads@gmail.com
Printed by Hawai'i Hōchi
See news daily at www.kaunewsbriefs.blogspot.com,
Twitter, and Facebook. See this newspaper and archive
in full color at www.kaucalendar.com.



KA PEPA PĀHALA

Volume 19, Number 6

The Good News of Ka'ū, Hawai'i

June 2021

Ka'ū Graduation, from pg. 1

as Gen Z and said their “core characteristics are diversity; you are comfortable in your own skin, are accepting of others whether it be race, sexual orientation, social status. In fact, you still help right the wrongs of the past more than many generations before you. You are the first digital natives. You are able to navigate information, seek equity... take a stand. There is so much earlier generations can learn from Gen Z.”



Jake Villa and Lentron Jara.

He encouraged the Ka'ū graduates to make friends with “those who make you better,” and lose those “who make you worse....put you down.....Receive guidance and give thanks for your blessings every day.”

Farias encouraged students to remember the teary eyes of their relatives who greeted them after the procession and to “keep that feeling.”

The 42 graduates are: Shawn T. Beckwith; Zachary E. Blanco Louis; Ryder H. Brown; Brinson G. Bunglick; Desal K. Dacalio-Camba; Dustin Dancel; Shacy M. Davis; Dusty Rose Emmsley; James R. Grimes; Elisha N. Hall; Lentron A. Jara;



Micah Polido-Kalihi and Dustin Dancel.



Photos of graduating seniors lined the fence of Pāhala Community Center where families, friends and students gathered.

Photos by Julia Neal



Ryder Brown, Zachary Blanco Louis, and Justin Denny.



Chesatie Kai poses with family.



Dusty Rose Emmsley and Cece Kamei-Silva.



William Tabios and Roseanne Lindsey celebrate with smiles.



Kaikea Kaupu-Manini with his father.

Emerlynnie Joanes; Chesatie M. Kai; Rebecca L. Kailiawa-Escobar; Kelso K. Kamei-Penera; Jayme A. Kaneshiro; Melakai P. Keohulua; Esmeralda Kuahiwini-Nunez; Bernadette A. Ladia; Roseanne Lindsey; Johnette P. Llanes-Masters; Alyana Malpal; Spencer R. Manthei; Kaimalialani T. McTavish; Henry Miranda; Elijah K. Muller-Afong; Naomi Omerod; Shannon K. Pacheco-Kamalii; Mary A. Patton; Kiani Perry; Stormy Y. Pettitt; Izaiah Pilanca-Emmsely; Micah Polido-Kalili; Pres-



ton K. Pua-Queja; Christopher K. Rivera, Jr.; Jesus F. Sanchez Anorve; Diego Solis-Lopez; Amber J. Sugrue; Michael K. Sullivan-P. Ambriel; William Tabios, Jr.; and Tiare K. Wong Yuen.



Rebecca Kailiawa-Escobar.

AIKANE PLANTATION COFFEE COMPANY

Ka'ū Coffee & Gifts

www.aikaneplantation.com

808-927-2252

ALI'I HAWAIIAN HULA HANDS COFFEE

2014 Hawaii 1st Place HCA

2012 SCAA Coffee of the Year

928-0606 • www.alihhhcoffee.com



Christopher Rivera and Jesus Sanches.

Stars over Ka'ū - June 2021

by Lew & Donna Cook

The Solar System

Mars starts June in Gemini (GEM), but heads straight for the Beehive, where it will pass through during June 22. That will be a grand sight! After sunset, grab your binoculars and just as it gets dark, take a look at the red “star” in the west. See all the little stars around it? Those are the “bees” from the beehive star cluster, or M44 as it is listed in the Messier catalog.

Venus is moving into the evening sky, and will also pass swiftly through the swarm of bees on July 2.

Jupiter is in Aquarius while Saturn is in Capricorn. Mercury is too close to the sun to easily see.

MOON AND SUN

Event		
Date.....	Moon Rise	Moon Set
Last Quarter		
June 1	12:23 am	12:02 pm
New Moon		
June 10	5:56 am	7:36 pm
First Quarter		
June 17	12:13 pm	12:52 am*
*(after midnight Fri. am)		
Full Moon		
June 24	7:32 pm	5:39 am
(the next morning)		
Last Quarter		
July 1	12:11 am	12:26 pm

On Thursday evening, June 24 the full moon will pass over (eclipse) the second brightest star in Sagittarius (the Archer). This star is called Nunki, and it disappears about 10:13 pm, only to reappear around



Bob Minor took this shot of prominences on the sun. Prominences are caused by sunspots (which are magnetic storms) and have loops in their magnetic fields that winds from the sun flow along.

11:33 pm. Use your binoculars to aid in observing this event, as the moon is blindingly bright. Although we would expect

Nunki to be identified as beta (B) SGR, it is actually sigma SGR. It is shown on our chart.

The sun undergoes an annular eclipse on June 10, but we won't see it because it happens at night, or you could travel to the arctic. The sun has a few spots on most days, but other days it has no visible blemishes. These sunspots are caused by intense magnetic storms on the surface of the sun. They give rise to prominences, and Bob Minor got a really nice photo of one the other day. These are shown in hydrogen alpha light which accounts for the red color. Had these been directed towards the earth, we would have seen nice auroral displays at high latitudes.

Sunrise.....	Sunset
June 4	5:44 am 6:58 pm
June 11	5:44 am 7:00 pm
June 18	5:45 am 7:02 pm
June 25	5:46 am 7:03 pm

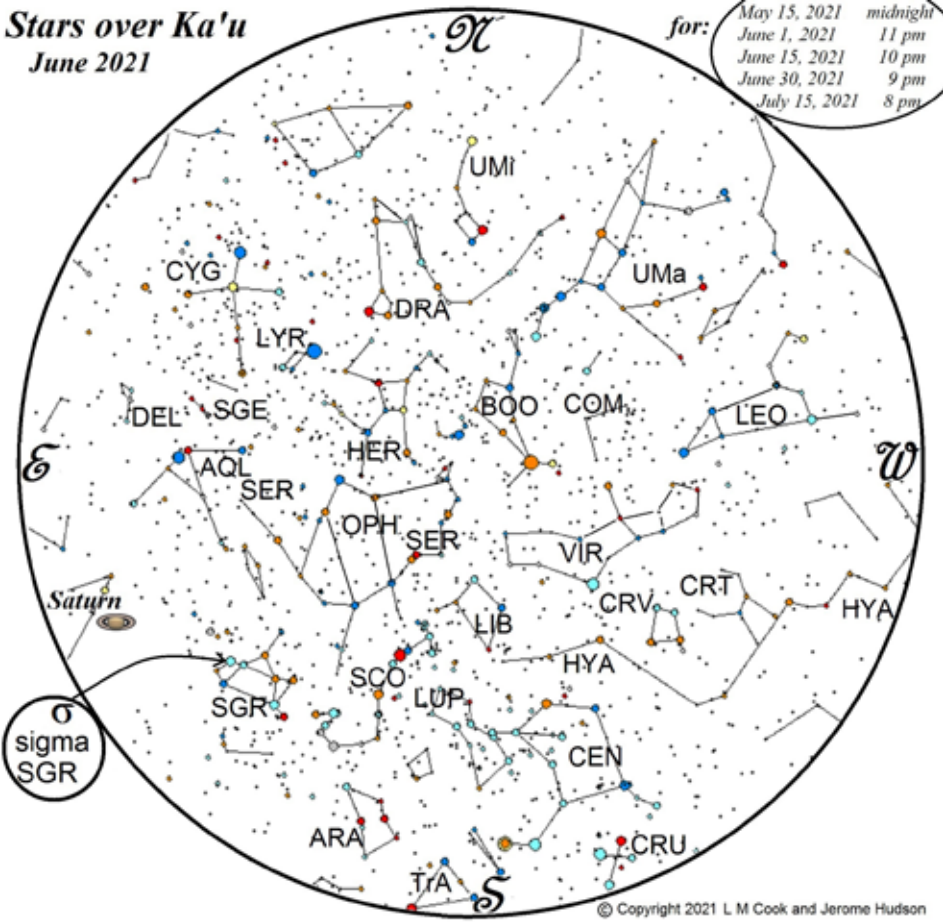
CONSTELLATIONS AND DEEP SKY OBJECTS

The Herdsman (BOO, for Bootes) with bright Arcturus is overhead, along with the dim serpent (SER) amidst Ophiuchus and Libra (LIB) the scales. To the west is Leo, the lion.

The Southern Cross is also up, as is Lupus (the wolf - LUP) and the Centaur, a man-horse beast (CEN) shown here slaying the wolf. The brightest star in the Centaur, alpha Centauri, is one of the closest stars to us. Actually, it is plotted as a double star, with one component being slightly larger than the sun, and the other star being a bit smaller. Each is quite like the sun in mass and in brightness. They are at 4.37 light years from us, revolving around each other every 80 years.

Actually, alpha Centauri is a triple star system. The very closest star to earth is called Proxima Centauri, which suffered a flare causing it to brighten significantly. It faded quickly, as all stars of its type do. Its current distance is 4.25 light years, circling the other two stars with a period of 550,000 years. This is the smallest, faintest and lightest member of the trio. Its mass is only 12% of the sun's, diameter a puny 15%, and its brightness 11.1 magnitude.

Stars over Ka'u June 2021

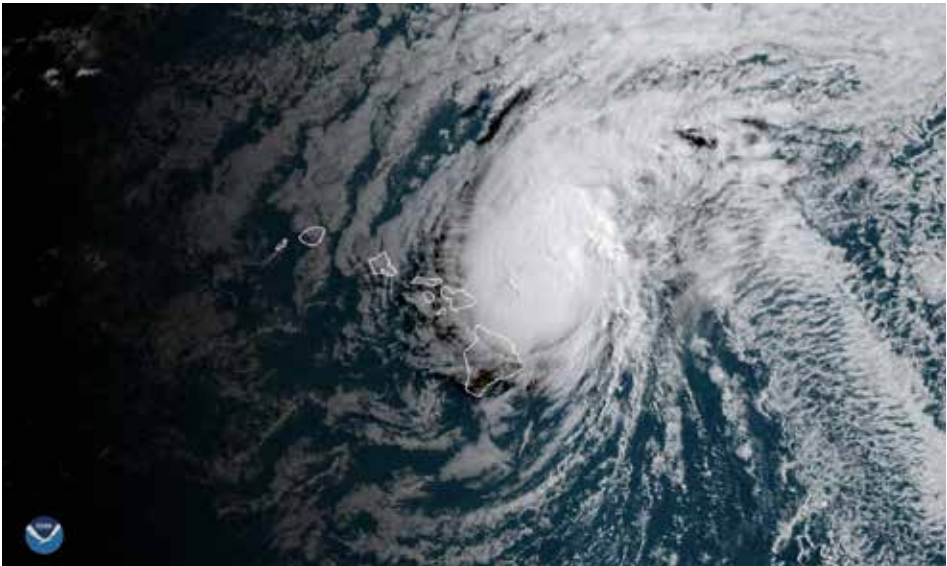


CONSTELLATIONS

AQL - Eagle	DEL - Dolphin	SCO - Scorpion
ARA - Altar	DRA - Dragon	SER - Snake
BOO - Herdsman	HER - Hercules	SGE - Arrow
CEN - Centaur	HYA - Hydra	SGR - Archer
COM - Berenice's hair	LEO - Lion	TrA - S. Triangle
CRT - Cup	LIB - Scales	UMa - Big bear
CRU - S. cross	LMi - Lion cub	UMi - Bear cub
CRV - Crow	LUP - Wolf	VIR - Virgin
CYG - Swan	LYR - Lyre	
	OPH - Ophiuchus (serpent-bearer)	

How to use this map: Hold this map over your head so that the northern horizon points toward the north on the Earth. For best results, use a red flashlight to illuminate the map. If you are looking east, hold it in front of you so that east is on the bottom. For south views, south at the bottom, and for west, west at the bottom. Use this map at the times shown on in its upper left corner. Keep this page handy and show it to your keiki next month. They probably have bedtimes before the time of the chart shown here. Check the colors of the stars with the color version at KauCalendar.com.

The constellations are presented with their 3-letter abbreviations, with their common names shown in the margins. This is done to take advantage of the truly dark skies Ka'ū is blessed with when there is no bright moon and the skies are clear of fog. The star charts are produced from a sky Atlas program written by Jerry Hudson, who has given us permission to publish it. Thank you, Jerry.



Hurricane Douglass passed near Hawai'i Island on July 26, 2020, as seen in this NOAA Satellite image.

Hurricane Season Starts in June

Hurricane season began June 1 with tracking and notifications coming from the Central Pacific Hurricane Center operated by the federal National Oceanic & Atmospheric Administration. According to NOAA, its upgraded Global Forecast System model will improve hurricane genesis forecasting this season, and coupled GFS with a wave model, will extend ocean wave forecasts from ten days out to 16 days.

NOAA forecasts two to five tropical cyclones in the Central Pacific this season and reminds everyone that it only takes one strike to do severe damage, and to plan for it. The predicted cyclones include tropical depressions, named storms and hurricanes. A normal Central Pacific season experiences a range of four or five tropical cyclones, according to NOAA.

Hurricane season runs through Nov. 30.

NOAA reports that it will deploy its largest array of ocean-observing platforms to-date during the 2021 season to gather data throughout the life-cycle of tropical systems in the Atlantic basin. Observations from Argo floats and Global Drifter Program buoys in sustained Pacific Ocean arrays will help inform Hawaiian region ocean state estimation and forecasting.

Check the Central Pacific Hurricane Center's website throughout the season to stay on top of any watches and warnings, and visit FEMA's Ready.gov for additional hurricane preparedness tips.

Hawaiian Electric advises residential and commercial customers to be prepared with emergency plans in place.

A statement from the utility says, **Hurricane Season, pg. 11**

The Ka'ū Calendar



Need Rain Water Catchment?

We can help with metal and plastic tanks of all sizes

Why Us?

- Highest industry standards
- Installation of Galvanized Steel tanks for commercial, farm, and residential
- Professionally trained
- Reliable & Experienced
- Committed to quality
- ALL TANKS DELIVERED TO CUSTOMERS LOCATION



Call Us Now
(808) 345-0335

Contact Us

Pacific Blue Catchment
Website under construction until February.
ASK US FOR EXAMPLES OF OUR WORK!
SEND EMAIL TO
admin@pacificbluecatchment.org



CLASSIFIED

ISLAND BUILDERS, General Contractor, We Do It All, Mike 808-870-5425

PLUMBING CONTRACTOR - License # C-26521, Mark Berkich Plumbing, 936-7778. Custom work. New and remodel.

Water delivery call Rudy at Wai Moku Deliveries 929-9222.

Macnut, Husk, Both Fresh and composted. Red and Dirty Cinders. Soil Mix. Delivered to your property. Bob Taylor 929-8112, 936-8623.

KA'Ū SPORTS REPORT

Volume 19, Number 6

The Good News of Ka'ū, Hawai'i

June 2021

Annual Ka'ū Coffee Trail Run Returns on Sept. 18

Ka'ū Coffee Trail Run will be on the slopes up Wood Valley again, following a year off pause during the pandemic. New will be its first 50K event. Sponsored by 'O Ka'ū Kakou as a community fundraiser, Ka'ū Coffee Trail Run is set for Saturday, Sept. 18.

The post on the Webscorer site says, "Due to COVID-19 concerns, we are initially limiting registration for the 50K to 25 runners and 50 for each of the other distances. Please be understanding as restrictions may change in the coming months. Because of this, the entry fee is refundable at this time."

The description: "Keiki to Kupuna, the Ka'ū Coffee Trail Run is a challeng-



ing course that meanders over Pāhala's unpaved trails. It is the perfect race venue, through coffee fields and macadamia nut groves."

The Ka'ū Coffee Mill's 1,900 acres features OKK's first 50k race as well as the traditional half marathon (21k), 10k and 5k distances. The event is touted as "the southern most race in the U.S."

Ka'ū Coffee Trail Run starts and finishes at Ka'ū Coffee Mill. The 50K will begin at 6:30 a.m., the half marathon at 6:45 a.m., the 10k at 7 a.m., and the 5k at 7:15 a.m. The cutoff time for all races be at 2 p.m. Medals will be given to all finishers and only 5k and half marathon participants will receive T-Shirts.



Ka'ū Coffee Trail Run, sponsored by OKK, is on for this Sept. 18. Register at <https://www.webscorer.com/register?raceid=233998>
Photo by Julia Neal



The Ka'ū Coffee Trail Run takes competitors through coffee and macadamia orchards, and uphill toward the rain forest.
Photo by Julia Neal

Free COVID Vaccines, Sports Physicals June 5

Free COVID vaccines for students 12 to 17 years of age, along with physicals for those playing school sports, will be available on Saturday, June 5. Location is Robert N. Herkes Gymnasium & Shelter; Ka'ū District Gym at 96-3150 Pikake St. in Pāhala.

Sports physicals will be from 9:30 a.m. to 1 p.m. The Pfizer and J&J vaccines will be available from 11 a.m. to 3 p.m. Sponsors include Kaiser Permanente, Ka'ū Rural Health Clinic and National Association of Community Health Workers.

To schedule, call Kaiser Permanente at 808-432-2260, Monday through Friday, 8:30 a.m. to 4:30 p.m. Or go online to kp.org/covidvaccine. There is no charge or copay. Bring ID and medical insurance card. Uninsured participants are invited and walk-in participants are welcomed.

SPORTS PHYSICAL AND COVID 19 PFIZER VACCINE
NOW BEING OFFERED TO STUDENTS 12YRS. +
(PARENTAL CONSENT REQUIRED for 12yrs. - 17yrs.)

**OHANA
STRONG**

SPORTS PHYSICAL EXAM @ 9:30am - 1:00pm
COVID 19 VACCINE @ 11:00am - 3:00pm
SATURDAY, JUNE 5, 2021
PFIZER / J&J Vaccines will be available

AT ROBERT N. HERKES GYMNASIUM & SHELTER
96-3150 PIKAKE STREET, PAHALA

Schedule your appointment now !!!
call Kaiser Permanente @ (808) 432-2260
Monday through Friday from 8:30am to 4:30pm

GO ONLINE TO: kp.org/covidvaccine
NO CHARGE, NO CO-PAY
Bring Identification and Medical Insurance Card
Uninsured Participants / "Walk In" Welcome

**OHANA
STRONG**

In partnership with Kaiser Permanente, Ka'ū Rural Health Clinic, National Association of Community Health Workers

Where Honesty Is Law And Service Comes FIRST

AutoTech
81-981 Haleki'i St. Kealahou

ASE Master Certified Technicians
Complete Full Service Auto Shop

*Alignments * Brakes * Diagnostics * Engines
Transmissions * Tires * State Safety Inspections AND MORE!!

808-322-8881
Fax: 808-322-8818

AutoTechHi.com

RELAY FOR LIFE OF THE BIG ISLAND

"Passport of Hope"

For every luminaria bought, you'll be entered into a drawing for a \$50 donation in your name to American Cancer Society and a giant luminaria box!

Join CU Hawaii and RFL Big Island at the Luminaria Drive-Through experience at Lili'uokalani Gardens on Saturday, July 17th from 7:15 to 8:15 p.m.

Learn more about our 2021 fundraising efforts at

CUHAWAII.COM/RELAYFORLIFE

\$5

SUGGESTED DONATION

Dedicate a luminaria bag to honor a loved one lost or a cancer survivor.

KA'Ū SCHOOL & YOUTH

Ka'ū Schools Reopen on Campuses on Aug. 3

Public schools in Ka'ū are focused on students returning to campus full time beginning Aug. 3. The state Department of Education sent a letter to parents and guard-

ians, penned by the outgoing statewide Superintendent Dr. Christina Kishimoto. She wrote:

"For the 2021-22 school year sched-

uled to begin on Aug. 3, all HIDOE schools will be fully open for daily, in-person learning. This includes resuming co-curricular and extracurricular activities such as clubs,

band and athletics." The letter to families says, "I would like to mahalo you for being a partner in your child's education in a very challenging school year. ... Improving conditions in our communities along with a growing body of science-backed research and updated health guidance have allowed us to increase in-person learning opportunities over the past two months at our elementary schools." She said, "it has been a great source of joy to hear the sounds of students engaged in learning and interacting with their peers and teachers again."

Kishimoto said the schools "have proven to be safe spaces throughout this crisis. Despite more than 800 cases reported by schools and offices since June 2020, consistent adherence to

safety protocols has meant that - to date - no transmission of the virus has occurred at a Hawai'i State Department of Education facility."

The superintendent credits following protocols that directed students and staff to: stay home when sick, consistent mask-



Kamalani Tuifagu's garlic aoli is one of the new products from Ka'ū High students, certified by OSHA.
Photo by Katie Graham

wearing, and proper hand hygiene.

She pointed to the new "layer of protection with COVID vaccinations more widely available and the recent approval of the vaccine for adolescents ages 12 and older.

"All of our high schools have been paired with health care providers to offer vaccinations to interested students and families, and we are now focusing on our middle school campuses. Additionally the Department is finalizing plans for weekly COVID testing at select pilot schools to further contain spread in our school communities."



You're Someone Special

KTA Super Stores is Hawai'i's locally owned and operated one stop shop, serving Hawai'i Island's grocery, household and pharmacy needs for over 100 years!

KTA Downtown, Hilo
321 Keawe Street
808-935-3751

KTA Puainako, Hilo
50 E. Puainako Street
808-959-9111

KTA Waimea
Waimea Center
808-885-8866

KTA Waikoloa Village
Waikoloa Highlands Center
808-883-1088

KTA Kailua-Kona
Kona Coast Shopping Center
808-329-1677

KTA Keauhou, Kona
Keauhou Shopping Center
808-322-2311

KTA Express, Kealahou
81-6602 Mamalahou Highway
808-323-1916

Read Daily News at
KauNewsBriefs.blogspot.com

PUNALU'U BAKESHOP
Supporting the Youth of Ka'u!



Home of the Famous Sweetbread

Open Daily 8:30 am to 5 pm

Gifts * Lunches * Snacks

Phone: 929-7343

www.punaluubakeshop.com

Hawaiian Macadamia Nut Services, LLC

(Formally known as Royal Hawaiian Services, LLC)

"A Proud Sponsor!"

P.O. Box 130

Pahala, HI

928-8341

GO TROJANS!

EVENTS & ACTIVITIES

UH Hilo, Colleges Require Vaccinations for On-Campus

University of Hawai'i will require COVID-19 vaccinations for on-campus students this Fall, provided that the vaccine is licensed by the federal Food & Drug Administration. The policy covers state university and community colleges on this island.



UNIVERSITY of HAWAII*
HILO

University of Hawai'i President David Lassner made the announcement. One or more COVID vaccines are expected to move from emergency use to general use status this summer and will become a student health requirement. Already required are TB clearance and immunizations for Measles Mumps, Rubella (MMR) and Tetanus-diphtheria-pertussis and Varicella. The Meningococcal Conjugate vaccination is also mandatory for first-year students

living in on-campus housing. The policy means that a COVID vaccination will be an added requirement for students to go onto the campus, with the exception of those with approved medical and religious exemptions.

"It is clear that a vaccinated campus is a safer campus for everyone, and a fully vaccinated student community enables the best opportunity for a healthy return to high-quality face-to-face teaching, learning and research," said Lassner. "This decision does not come lightly, and is based on guidance from our own Health and Well-Being Working Group as well as the American College

Health Association recommendation that all on-campus college students be required to be vaccinated."

Unvaccinated UH students will still be welcome and may enroll in online courses. Online learners will continue to be able to engage with student services online, as they have done over the past year, and will be able to participate in student activities virtually.

All UH students and employees can sign up now to be vaccinated, and UH urges all members of the UH community to be vaccinated now. The university will also ensure there are vaccination opportunities over the summer and at the beginning of fall for

members of the UH community who arrive from other locations where they may not have been able to be vaccinated.

Hawai'i Department of Health Director Libby Char says UH's decision to add the COVID-19 vaccine is an important development for the university and the state.

"Having fully vaccinated campuses will help tremendously to create a much safer learning environment and minimize any transmission of COVID-19 from person to person," said Char.

According to the U.H. statement, the university will initiate formal discussions with the three unions that represent UH employees about possibly requiring COVID-19 vaccination.

Agri-preneurs Earn OSHA Safety, Plan More Products

Eight Ka'ū High School Agri-preneurs recently earned their OSHA-10 Safety Certification with a special focus on Agriculture Safety. Students spent ten hours learning about safety topics, including history and purpose of OSHA, workers safety rights and responsibilities, how to read and understand Safety Data Sheets, how to safely handle chemicals and other hazardous materials, operate machinery, and use proper Personal Protective Equipment.

The Ka'ū students passed the safety exam with a minimum score of 70 percent to earn this industry certification. The first two students to earn this credential were Amelia Bounos-Urbe, who is entering her senior year as creator of Mana'olana Butters, and Kamalani Tuifagu, also entering the senior class and creator of a new line of jewelry, along with garlic aoli and a honey mustard. Both said they look forward to continuing their learning in the Agri-preneurship Academy of the new Ka'ū Global Learning Lab.

"I am excited to continue to grow my business, Mana'olana Butters, and develop new products and offerings using locally grown ingredients," said Bounos-

Uribe, of Ocean View. Tuifagu, who is from the South Point area and brother to the owner of Honua Coffee, shares that "this year I was able to start a line of jewelry inspired by the natural beauty of Ka'ū. Next, I'm excited about exploring other areas like using locally sourced ingredients to create value-added products. This year I created garlic aioli and honey mustard that was distributed to families in the food boxes from the hubs in Pāhala and Nā'ālehu."

Other students earning their safety certification include incoming seniors Kelson Gallano, Cyrus Eder, and junior Collin Hanshaw of Pāhala; and seniors Cody AhYee, Elaina Akiu, and junior Joseph Kaulana Akiu of Nā'ālehu. Ah Yee shared with visiting incoming ninth grade students: "This year I learned about hydroponics and aquaponics, and next year I'm really looking forward to earning my commercial drone pilot license and passing the 30 hour safety exam to drive the tractor." A variety of industry certifications will be a part of all students program of study in the Agri-preneurship Academy, which will help students demonstrate their competency in various areas that will lead

to high wage, high skill, and in-demand careers.



Joseph Kaulana Akiu offers a maile lei to First Lady Dawn Ige at the Ka'ū High School campus.

Photo by Jen Makuakane



Ka'ū Global Learning Lab students sow seeds with Naoaki Hirata from MyFarm on April 29.

Photo from 'Aina Akamu

KA'Ū

AUTO REPAIR



YOUR ONE-STOP SHOP!!

U-HAUL Available Here **INTERSTATE BATTERIES**

Ka'alaiki Rd. in Nā'ālehu

TOW TRUCK SERVICE

Safety Inspection Only by Appointment, Station #500

929-9096, MOBILE 936-2272

Ka'u Andrade

Contracting, Inc.

Land Clearing & Excavation

License No. C-15571 * C-11607

PUC 5133-C

CALL WALLY



P.O. Box 74
Nā'ālehu

Bus: (808) 929-7106
Bus: (808) 929-7322

Pāhala Plantation Cottages

Enjoy a Staycation

928-9811

SUPPORT LOCAL BUSINESSES

Tell them you saw their ad in *The Ka'ū Calendar!*



Dodo Mortuary, Inc. & Crematory

In your time of need...

The Oldest and Largest Mortuary on the Big Island

Serving All Faiths with Dignity & Integrity

Celebrating over 100 years of Excellence



Mitchell M. Dodo
Vice President/Operations Manager

199 Wainaku Street
Hilo, Hawai'i 96720
Tel: (808) 935-5751
Fax: (808) 935-1074
Cell: (808) 987-3235
mitchell@dodomortuary.com

www.dodomortuary.com

Read Daily News at KauNewsBriefs.blogspot.com

COMMUNITY CALENDAR

See updates at

www.kaunewsbriefs.blogspot.com

OCEAN VIEW DRIVE IN presents movies on Fridays at 6:30 p.m. Gates open at 4 p.m. Once the car park area is full, gates will be closed. There will be refreshments on sale, such as Thai Grindz, popcorn, and candy. No entry or membership fee; donations accepted. Attendees must join Ocean View Theater Club on Facebook. For details, see the Ocean View Community Market and Outdoor Theater Facebook page.

GOLF & SOCIAL MEMBERSHIPS for Discovery Harbour Golf Course and its Clubhouse: The new Club offers Social Memberships, with future use of the clubhouse and current use of the pickleball courts as well as walking and running on specified areas of the golf course before 8 a.m. and after 3 p.m. to enjoy the panoramic ocean views. Golf memberships range from unlimited play for the avid golfer to casual play options. Membership is required to play and practice golf on the course. All golf memberships include Social Membership amenities. Membership fees are designed to help underwrite programs and improvements to the facilities. Call 808-731-5122 or stop by the Clubhouse during business hours, 8 a.m. to 4 p.m. daily at 94-1581 Kaulua Circle. Email clubatdiscovery-harbour@gmail.com. See The Club at Discovery Harbour Facebook page.

HIKE ONE OF THE MANY OPEN TRAILS AND SEE THE LAVA LAKE. Drive to the overlooks in Hawai'i Volcanoes National Park at Volcano and Kahu-kū units. See nps.gov/havo. Take a Guided Nature Walkthrough Nature Trail & Sculpture Garden, Mondays, 9:30 a.m. at Volcano Art Center Ni'aulani Campus in Volcano Village. No reservations for five or fewer – limited to ten people. Free; donations appreciated. Email programs@volcanoartcenter.org. Garden is open to walk through at one's own pace, 10 a.m. to 4 p.m. weekdays. volcanoart-center.org, 967-8222.

KA'Ū COFFEE FESTIVAL'S VIRTUAL PRESENCE is archived at www.kaucoffefestival.com. See stories and photos of farmers and their orchards, a concert and classes and discussions about Ka'ū Coffee.

OUTDOOR MARKETS

VOLCANO FARMERS MARKET, Cooper Center, Volcano Village on Sundays, 6 a.m. to 10 a.m., with much local produce, baked goods, food to go, island beef and Ka'ū Coffee. Cooper Center's EBT Machine, used at the Farmer's Market, is out of service until further notice. EBT is used for Supplemental Nutrition Assistance Program, formerly Food Stamps. Call 808-967-7800.

'O Ka'ū KĀKOU MARKET, in Nā'ālehu, open Wednesday, and Saturday, 8 a.m. to 2 p.m. Limit of 50 customers an hour, 20 vendor booths, with 20 feet of space between vendors. Masks and hand sanitizing required, social distancing enforced. Contact Sue Barnett, OKK Market Manager, at 808-345-9374 (voice or text) or kaufarmer@aol.com for more and to apply to vend. See facebook.com/OKauKakouMarket.

OCEAN VIEW COMMUNITY MARKET, open Saturdays and Wednesdays, 6:30 a.m. to 2 p.m., on the corner of Kona Drive and Highway 11, where Thai Grindz is located. Managed by Mark-Council. Masks mandatory. 100-person limit, social distancing required. Gate

Lā'au Letters: Native Plants of Ka'ū

Welcome to the first edition of Lā'au Letters: Native Plants of Ka'ū. Read about Ka'ū's native plants' mo'olelo (stories), uses, preferred habitats, and opportunities to adopt them for stewardship. This column seeks to encourage making new plant friends and to re-unite with others.

'A'ali'i (*Dodonea viscosa*)

by Jodie Rosam

The saying "He 'a'ali'i au, 'a'ohe makani e kula'i" translates into "I am an 'a'ali'i shrub, no wind can push me over." This speaks to the similarity between the Ka'ū people and the 'a'ali'i, both able to twist and bend but seldom to break, even in the face of difficulties. The name 'a'ali'i was given to this divine lā'au (plant) because it is a kino-lau (form) of Laka (the Goddess of the Forest), and is often used on hula kuahu (altars).

Description: 'A'ali'i is an indigenous shrub or a small tree that is native to Hawai'i, as well as other tropical and subtropical locations across the globe. It is a member of the Soapberry (Sapindaceae) family.

Uses: The strong, dark brown-red wood of 'a'ali'i is known for traditional Hawaiian house construction and the making of weapons, agricultural tools, bait sticks, and lā'au melomelo (a type of lure used in net fishing). The leaves are medicinal. Fruit capsules become red dye for kapa (fabric) and used in lei.

Habitat: 'A'ali'i grow in open sites mauka to makai. Much like 'ōhia, 'a'ali'i has an impressive distribution, including lava flows, dry forests, high elevation shrublands, and even mesic (moderately wet) to wet forests. Notice the gorgeous stands of 'a'ali'i along the highway from Volcano to Pāhala - pull over and appreciate its beautiful seed capsules in a range of mahogany red, reddish purple, brown, orange, and yellow, and its glossy, green, slender leaves. Seed capsules nearly year-round though they seem to flourish around the holiday season, and the color contrasts make it a favorite in holiday wreaths and decorations.

Growing and Purchasing: 'A'ali'i germinate readily from

unlocked for vendors at 5:30 a.m., \$15 dollars, no reservations needed. Parking in upper lot only. Vendors must provide own sanitizer. Food vendor permits required. Carpooling encouraged.

OCEAN VIEW SWAP MEET open at Ocean View makai shopping center, near Mālama Market. Hours for patrons are 8 a.m. to 3 p.m. Saturday and Sunday. Vendor set-up time is 5 a.m. Masks required.

ALOHA FRIDAY MARKETPLACE is hosted by Nā'ālehu Main Street on Fridays from 8 a.m. to 1 p.m. on the grounds of Kauaha'ao Congregational Church in Wai'ōhinu. The farmers market, swap meet, food court and place of arts and crafts also feature health practitioners, entertainers and more. Email AlohaFridayMarket@gmail.com.



'A'ali'i illustration by Joan Yoshioka

seed. Pre-soaked seeds will sprout in about one month. Alternatively, plants may be available for purchase at Aileen's Nursery, Big Island Plants, and Future Forests. 'a'ali'i make lovely color contrasting hedges, accent plants, and even potted plants on a lanai with adequate drainage. They are perfect for home gardens with limited water, full sun, and even areas receiving salt-spray.

About the Author, Jodie Rosam: A Ka'ū resident, Jodie Rosam says she has a deep love for native plants and a passion for exploration, with over 15 years experience working in restoring Hawai'i forests. As a mother and educator, she says the next generation has the power to lead the world to a sustainable future and that she is committed to teaching her children and others from a "place-based" perspective.

About the Artist, Joan Yoshioka: A Volcano resident, Joan Yoshioka is a conservationist at heart and has dedicated her life to preserving the native plants and animals of Hawai'i through her work with federal, state, and private organizations for more than 30 years. She said the key to the most fundamental and truest part of ourselves is found in nature and she constantly draws on it for inspiration.



Joan Yoshioka



Jodie Rosam

CHURCH SERVICES

THE MARSHALLESE NEW BEGINNINGS CHURCH has opened in Ocean View with Sunday services starting at 5 p.m., as well as Bible studies on Wednesdays at 7 p.m. on the grounds of Ocean View Evangelical Community Church. New Beginnings Church is launched by Pastor Atkin Jello and his wife Rose, who moved to Ocean View from Arkansas. The church is located at 92-8977 Leilani Circle in Ocean View. For further information, contact Pastor Atkin Jello at 479-316-9892. "Everyone can welcome this new church to our community," said a statement from host church OV Evangelical. The church notes that May was Asian American, Native Hawaiian/Pacific Islander Heritage Month.

OCEAN VIEW EVANGELICAL COMMUNITY CHURCH holds services on Sundays beginning with Sing-Along on the Square at 10:15 a.m., followed by Sunday Morning Service at 11 a.m. In-person services following CDC Guidelines and Hawai'i mandates by using hand sanitizer, wearing face masks and practicing social distancing. Music and Sermons are posted to FaceBook.com/OVECC. Also see FaceBook.com/OVECC for more. The church campus for Ocean View Evangelical Community Church is at 92-8977 Leilani Circle. Call 808-939-9089 or call 928-8039 or 937-2155.

SUNDAY DRIVE-IN WORSHIP is available at Wai'ōhinu's Kauaha'ao Congregational Church. Parking on the lawn begins at 10 a.m., with Worship Service starting at 10:10 a.m. Face coverings required when usher comes to vehicle to pass out worship bulletin and other materials, and at the same time, collect any offering or gifts the individual(s) would like to give, or when leaving vehicles for the restroom. Church provides paper fans to stay cool. Bring water. Catch the live-streamed service at 10:10 a.m. and Praise Jam, which runs from 9:15 a.m. to 9:45 a.m. Service is emailed Sunday afternoon to anyone on the email list. Sign up by emailing at dwongyuen.kauahaao-church@gmail.com or call 928-8039 or 937-2155.

ST. JUDE'S HOSTS LIVE DIGITAL WORSHIP on Sundays at 9:30 a.m. on Zoom. Anyone with difficulty using Zoom can contact DonHatch@Hatchville.com. "Don't be shy. Zoom is an easy app to use," said Ocean View's St. Jude's Episcopal Church spokesperson Cindy Cutts.

Hope DIA-mend Ministries holds outdoor services Sundays at 9:45 a.m. at 92-898 Ginger Blossom Lane in Ocean View. Masks and distancing required. For help



FREE AND ONLINE!

TRADITIONAL HAWAIIAN HEALING SERVICES

Sign up at HMONO.org/services or learn more by calling (808) 969-9220

<p>LA'AU LAPA'AU LEVEL 2 CLASS</p> <p>Learn more about the spiritual healing wisdom and knowledge of Lā'au Lapa'au with Po'okela Ikaika Dombrigues.</p>	<p>HO'OPONOPONO CLASS</p> <p>Kumu Howard Pe'a teaches a spiritual perspective to reconciliation and forgiveness.</p>
<p>MALA 101: BEGINNERS GARDENING</p> <p>Learn to garden at home in this introductory online series with instructor Carly Wyman.</p>	<p>LOMILOMI CLASS</p> <p>Lehua Hobbs teaches the spiritual healing art of lomilomi, pule, and protocol.</p>

This publication is supported by the Health Resources and Services Administration (HRSA) of the U.S. Department of Health and Human Services (HHS) as part of an award totaling \$3,364,836.00 with 20% financed with non-governmental sources. The contents are those of the author and do not necessarily represent the official views of, nor an endorsement by HRSA, HHS or the U.S. Government.



This project is sponsored by the Office of Hawaiian Affairs, working to improve the lives of Native Hawaiians.

JUNE 2021



Mural-In-A-Day Graces Garden

A one-day mural went up with help from Hawaiian studies students at the garden on the Pāhala school campus in late May. Mural artist Susan Champeny led the session, sponsored by Vibrant Hawai'i. Photo by Gary Bertram

and/or to donate, call or text Pam Ako at 808-937-6355, or call the Ministry at 808-920-8137. See her on Facebook and at hopedia-mendministries.com.

HEALTH & FITNESS

TRADITIONAL HAWAIIAN HEALING SERVICES from Hui Mālama Ola Nā 'Ōiwi including La'au Lapa'au. Learn Ho'oponopono, traditional gardening for healing plants, and Lomilomi. Sign up at HMONO.org/services. Call 969-9220.

SWIM LAPS AT PĀHALA POOL Mondays through Fridays.

KA'Ū HOSPITAL AND BAY CLINIC offer COVID testing referral from the ER, a physician or a Ka'ū Clinic health provider.

COVID-19 VACCINATIONS FOR WALK-IN APPOINTMENTS and scheduled appointments are available at

Ka'ū Hospital and other Hilo Medical Center affiliates. Schedule via VAMS. cdc.gov at select locations. Recipients between 12-17 years old must receive the Pfizer vaccine. Recipients 18 years and older may receive Pfizer, Moderna, or the Johnson & Johnson vaccine. In addition, upon discharge from the Emergency Department or hospital, Hilo Medical Center will offer patients the one-dose Johnson & Johnson vaccine. Ka'ū Hospital Rural Health Clinic is offering the Moderna vaccine. Schedule an appointment by calling 808.932.4205. Appointments available Tuesdays and Thursdays, 11:30 a.m.-noon and 1p.m. – 3:30 p.m.

COVID vaccines are also available in Ka'ū through Long's Drugs in Pāhala and Bay Clinic in Nā'ālehu, as well as mass vaccination events.

KUAHIWI RANCH

FEED STORE &
LOCALLY PROCESSED GRASS FED BEEF

LIVE MEAT CHICKENS

&

FEED FOR

CATTLE
GOATS
SHEEP

HORSES
DOGS
PIGS

STORE HOURS

SUNDAY, 11AM - 3PM
&
MONDAY - FRIDAY
10AM - 5PM

95-5520 MAMALAHOA HWY

CONTACT INFO:
808-929-7333 - 808-938-1625
KAOHI@KUAHIWIRANCH.COM

Across Playground Area
of Na'ālehu Elementary School
Top of Long Driveway

E.F. Cash-Dudley

Estate Planning & Family Law

Offering FREE 30 min. Consultations
over Zoom

Wills \$110, Advance Healthcare Directives \$110,
Powers of Attorney \$110, Transfer on Death Deeds \$350
and Trusts \$2000-\$3500.

(808) 854-5912 efcashdudley@gmail.com
www.efcashdudleylaw.com

Open 7 days/week, 9:00am-3:00pm
Except Major Holidays

Maximum 10 people allowed in store at a time.
Curbside still available and online advance
curbside ordering is recommended.
No tours available at this time, but guests
are welcome to walk around the mill area.

VISIT OUR WEBSITE
OR CALL FOR DETAILS

KAUCOFFEEMILL.COM/CURBSIDE
808-928-0550

96-2694 WOOD VALLEY ROAD
PAHALA, HAWAII

FOLLOW US ON SOCIAL MEDIA @KAUCOFFEEMILL FOR UPDATES!

FILM SCREENING AND
CONVERSATION

WITH WRITER & DIRECTOR 'ĀINA PAIKAI

HAWAIIAN
SOUL

A SHORT-FILM BASED ON THE LIFE AND MUSIC OF
GEORGE HELM

This narrative short-film is based on the true story of Hawaiian hero, George Jarrett Helm Jr. It is a tribute to the legacy of a leader and artist that used his voice to inspire a revolution of consciousness.

06.15.21 | TUES | 7PM

PAHALA PLANTATION HOUSE

96-3209 Maile St. Pāhala, HI 96777

FREE ADMISSION

The Ka'ū Calendar

www.kaucaledar.com • kaunewsbriefs.blogspot.com

June, 2021 Page 9

NUPEPA NA'ĀLEHU

Volume 19, Number 6

The Good News of Ka'ū, Hawai'i

June 2021

Miranda's Farms, Aikane Plantation Coffee in Tasty Kona

Miranda's Farms has announced it will be an exclusive coffee sold in the new venue Tasty Kona on Ali'i drive in Kona. Maria Miranda reports: "We will have the grand opening ribbon cutting ceremony on June 6 at 3 p.m. along with a taste testing of Miranda's Farms Coffee. Music, dance, face painting and samples of Tasty Kona's gourmet products will be provided. She also noted that

Aikane Plantation Ka'ū Coffee will also be sold at Tasty Kona.

"It is an exciting new chapter for us, one where we are in a different region and simply a new location in the heart of Kona," said Miranda.

The Mirandas sell their award winning Ka'ū Coffee at their farm store at 93-7136 Hawai'i Belt Rd, Hwy 11, between South Point Road and the Kahuku

section of Hawai'i Volcanoes National Park.

Phil Becker of Aikane said their full line of coffee, including K-cups will be at Tasty Kona.

See more on Miranda's Farms at www.mirandasfarms.com. See more on Aikane Plantation Coffee at www.aikaneplantation.com



Ka'ū Coffee will be featured at Tasty Kona.

Photo from Miranda's Farms

BLNR Rejects Opposition to funding Kiolaka'a

A call for a contested case hearing from opponents of state funding to protect Kiolaka'a on the Ka'ū Coast was turned down in late May by the state Board of Land & Natural Resources.

BLNR unanimously passed the funding in April, following numerous community meetings by zoom and in person to assess community support.

In May, BLNR unanimously rejected the call for a contested hearing. Opponents contend that the Ala Kahakai Trail Association, which would hold title to the land, would not be their group of choice to steward the place. Contested hearing requests

were filed by Palikapu Dedman, of Pele Defense Fund, and a group called Ka'ū Advisory Council. Representatives of both groups opposed the funding at recent public hearings and meetings.

In recent meetings and written commitments, Ala Kahakai Trail Association has welcomed those of the opposition to join in the stewardship of the land which reaches from south of Wai'ōhinu to Ka'alu'alu Bay.

Several native Hawaiian cultural practitioners including Nohea Ka'awa are members of the Ala Kahakai board and its Ka'ū advisory committees, along with experts in native plants, and local residents who have



Wiliwili trees at Kialoka'a where funding has been secured towards protecting the land.

Photo from ATA

worked in forest and shoreline restoration.

During its presentations seeking funding to purchase the property, Ala Kahakai noted that the land is owned by a Las Vegas real estate developer who plans to subdivide and sell it should the funding fail and the conservation group becomes unable to buy the land. Ala Kahakai also said it would be willing to turn over management of the land to a qualified non-profit in Ka'ū.

Wai Moku
WATER DELIVERY

CALL RUDY
929-9222

B&E PROPANE

OPEN DAILY 9 AM - 5 PM
LOCATED ON MELIA ST.
IN NĀĀLEHU
(808) 896-0841

KEIKI NATURE ADVENTURE CAMP

EVERY MONDAY ~ JUNE 7 - JULY 5

8:00AM - 12:00PM

AT NA'ALEHU HUB

JUNE 7: PLANT MAGIC

Discover the wonders of plants! Learn how to plant and grow foods from your kitchen with fun games, snacks, and activities!

JUNE 14: ART IN THE GARDEN

Learn how to make nature sculptures and build your very own fairy garden! Enjoy some fun art games and snacks too!

JUNE 21: HAWAIIAN VOYAGERS

Get on the boat with the early Polynesians to learn about the first plants ever brought to Hawai'i through planting, harvesting, and yummy cooking activities!

JUNE 28: MAD SCIENTISTS

Turn on your science brain to learn all about the parts of a plant and how we can use (and eat!) each part through games and activities!

JULY 5: CRITTER DETECTIVES

Help us investigate the many different microorganisms, insects, and creatures crawling in the garden! Be prepared to get dirty!



Free Enrollment!
To sign up for any of the dates,
please contact
Katie Graham at
katie.graham@foodcorps.org



PH.808 333-0789

PUC 5238-C

NEED WATER? WE DO WATER HUALING

Specializing In:

- | | | |
|--------------|-------------|-----------------|
| *Water | *House Pads | *Septic Systems |
| *Trenching | *Rock Wall | *Demo |
| *Driveway | *Lowboy | *Dump Truck |
| *Coffee Farm | *Bulldozing | *Free Estimates |

YOUR ONE STOP GALLERY & GIFT SHOP

KA'U ART Gallery
AND GIFT SHOP

95-1165 Ka'alāiki Road,
Building #220,
Nā'ālehu HI. 96772

www.kauartgallery.com

[f](#) [i](#) [t](#)

DAVIS PLUMBING

Davis LLC
Plumbing
Sustainable Plumbing

Kahula Davis
808-854-7875
kahuladavis@yahoo.com

93-1124 Niu St. Naalehu, HI 96772
Licensed and Insured • License # C-38524

New Constructions, Additions, Renovations, Repairs,
Solar Systems, Gas Lines, Water & Sewer Main, Bathroom Remodel

76 Union 76 Wiki Wiki Mart
Station opens daily 5 a.m. to 11 p.m.

- Hot dogs, Sandwiches, Heat & Serve Entrees
- Bulk Costco Foods
- Beer & Wine
- Propane, 10 a.m. - 6 p.m. Daily

Visit Wiki Wiki Mart on Facebook [f](#) [t](#)

929-7135 • In Nā'ālehu on Hwy 11
Next to Naalehu Park towards Hilo

WIKIWIKI Mart

KAHUKU TO MILOLI

Volume 19, Number 6

The Good News of Ka'ū, Hawai'i

June 2021

County to Host Junk Vehicle Pickup in Ocean View

A junk vehicle collection event has been announced by the County of Hawai'i for July 17 and 18. Ahead of the pick-up dates, the county will hold pop-up events at Hawaiian Ocean View Community Center to help area residents to "permanently junk" their certificate of titles, answer any questions and assist with applications. The pop-up events will be held on Saturday, June 26 and Saturday, July 10 from 10 a.m. to 4 p.m.

Those wanting to dispose of vehicles must bring their Certificates of Title. To

receive a copy of title, contact a county Vehicle Registration and Licensing office.

Applications for the collection event must be submitted by July 10. Applications are available at <https://www.hawaiiiz-erowaste.org/recycle/automotive/>. The slogan for the campaign is, "Let's all do our part in making our island home more beautiful, one junk vehicle at a time." For more, contact the Derelict/Abandoned Vehicle Section at 961-8552 or DEMAC@hawaiiicounty.gov.

Hurricane Season, from pg. 4

"Hawaiian Electric crews work year-round to harden the company's five island grids so they are better able to withstand the effects of powerful storms. A major focus of Hawaiian Electric's efforts to build resilience involves reinforcing poles, lines, and other equipment. The utility also spent \$18 million in 2020 to clear trees and vegetation from around power lines and equipment, resulting in fewer and briefer outages during storms."

Hawaiian Electric said its work to boost resilience includes equipment upgrades as well as longer-term planning ef-

forts that will benefit customers well into the future. On Hawai'i Island, Hawaiian Electric upgraded and relocated a ten-mile sub-transmission line in the Hawai'i Volcanoes National Park area. "The work was part of a collaboration to close a 22-mile gap in the island's fiber optic loop and ensure a stable communications network for internet and wireless customers, including first responders and schools," said the statement from Hawaiian Electric.

To prepare for the hurricane season, Hawaiian Electric offers a Handbook for Emergency Preparedness. Along with a

Hurricane Season, pg. 12



The County of Hawai'i will help to beautify Ocean View by picking up junk vehicles on July 17 and 18 from those who register.

Photo by Ann Bosted

Celebration of Life for Pastor Lance Ako Set for June 26

A celebration of life for Pastor Lance Ako of Hope DIA-mend Ministries will be held Saturday, June 26 at the Ocean View church location at 92-8988 Ginger Blossom Lane.

Regarding the vehicular accident in Ocean View that left Lance Ako critically injured, Pastor Pam Ako said, "God raised him from the dead on the side of the road Feb. 17 and gave use 75 days of miracles after miracles. He was living testimony of God's love and power when we all came together praying in one accord."

Lance and Pam Ako are known for their ministry, providing food and shelter to many people and counseling and prayer for many more, as well as youth camps and other services in this community.

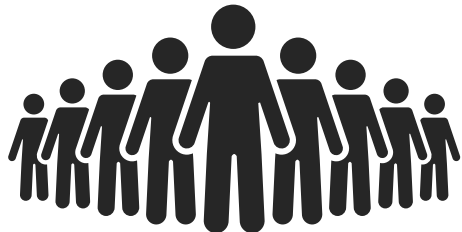
They also participated in many com-



munity activities, including playing Mr. and Mrs. Santa Claus at venues across

Ka'ū and collecting and delivering free food for holiday dinners.

Reach More People



Advertise here

Contact us for rates and space reservation
808-928-6471 or email: mahalo@aloha.net

Propane

929-9666

South Point U-Cart Inc.

Hours

7:30 – 5:00, M – F

Sat. 8:00 – 12:00, Closed Sun.

- Hawaiian cement
- Redi-mix concrete
- Rebar #3#4#5
- Wire 6x6x10x10
- Sand #4 (for water tanks)
- Rock #3
- Cinders, red & black
- Pier blocks, misc. concrete prods.

Construction Equipment Rental

- Compactors
- Cement finishing
- Generators
- Scaffolding
- Ladders
- Pressure washer
- Compressors
- Painting equipment
- Floor finishing equipment
- Welding equipment
- Automotive equipment
- Cordless hand tools
- Tools
- Power tools
- Hand tools
- Trailers
- String trimmer
- Chainsaws (we sharpen)
- Lawn mower
- Party equipment

Small Engine Sales & Service

AUTHORIZED DEALER, PARTS AND SERVICE: Shindaiwa, Wacker, Titan, airless, Echo, Honda Engines, Snapper, Goldblatt, Briggs & Stratton, and Grimmer Schmidt



Hawaiian Ocean View Ranchos • Below gas station
P.O. Box 6182, Ocean View, HI 96737 • Stan and Marianne Troeller, Proprietors

SERVING THE KA'U AREA OVER 25 YEARS

OCEAN VIEW MARKET
Supermarket / Gas Station
92-8676 Lotus Blossom Lane
Ocean View, HI 96737
Phone: 929-8800
Sunday - Saturday, 6 AM to 8 PM

PAHALA PLANTATION COTTAGES
Homes & Cottages in Historic Pahala Village, Hawai'i Island
ENJOY A STAYCATION
CALL (808) 928-9811

Ocean View Painting & Power Washing
Cleaning and Property Care
Over 30 Years Experience
Honest, Friendly, and Reliable
Free Estimates
Kirk Slack
(808) 313-1698

You don't have to
FLY AWAY
to GET AWAY
Plan your staycation
928-9811
www.pahalaplantationcottages.com



MIRANDA'S FARMS

2019 HCA Ka'ū Coffee Champion
Visit us at 93-7136 Mamalahoa Hwy 11
between Kahuku and South Point Rd.
www.MirandasFarms.com
MirandasFarms@yahoo.com, 808-929-7572

ENERGY, SUSTAINABILITY IN KA'Ū

Volume 19, Number 6

The Good News of Ka'ū, Hawai'i

June 2021

Public Utilities Commission to Reconsider Biofuel Plant

Eucalyptus logs piled up around Pāhala could go to the Hū Honua biofuel plant north of Hilo, if the Public Utilities Commission issues a new order allowing the \$42 million facility to open. The use of



Akuugawai

the new factory has been tied up in court. The big-picture issue is whether its method of burning wood for fuel should be subject to competitive pricing with other renewables. Opponents claim it will be too



Manini Uliuli

expensive. Supporters contend that this biofuel factory should be included in the mix of alternative energies on this island for energy security, even though it is more expensive than wind, solar, hydro and geothermal.

The state Supreme Court ruled in May that the PUC must reconsider its denial of a waiver to Hū Honua, which would have exempted it from price competition - and allow the plant to open.

Opponent Life of the Land issued a statement from Executive Director Henry Curtis, saying it is "pleased with the ruling by the Hawai'i Supreme Court regarding Hū Honua." The statement says, "The Hawai'i Supreme Court in essence asserted that the Hawai'i Public Utilities Commission cited the wrong legal provision in

denying the waiver. Now the PUC can go back and reissue their decision citing the correct standard.

"The Hawai'i Public Utilities Commission explained that its reevaluation of HELCO's waiver request

was unavoidable because HELCO had vacated the 2017 waiver. The Hawai'i Supreme Court rejected this statement, their decision in Life of the Land's appeal of the PUC decision approving the Power Purchase Agreement dealt only with the application and not the waiver.

"The court stated, 'We express no opinion as to the PUC's discretion, if any, to address the 2017 waiver; we merely hold that HELCO I and its remand instructions did not affect the waiver.'"



Taro Varieties Described Online

Taro varieties in Hawai'i, the 1939 book, is now offered online by University of Hawai'i. The information in this online catalog is extracted from the book and contains detailed descriptions of 84 varieties of taro then found in Hawai'i. The taro originate from Hawaiian Islands, Samoa, Japan and other places. See the descriptions, uses, origins, photos and more at <https://www.ctahr.hawaii.edu/site/Taro.aspx>

Watch for Power Lines when Trimming, Picking Fruit

Picking fruit and trimming trees near overhead power lines can lead to injury or death, warns Hawaiian Electric. Hawaiian Electric reports that last month a man was injured after his metal fruit picker contacted a power line.

"With summer right around the corner, many residents look forward to harvesting local fruits across Hawaiian Electric's five-island service territory. But the company wants residents to stay safe and avoid serious injury - or death - when picking fruits near power lines. Since 2014, Hawaiian Electric has annually reported anywhere from zero to two incidents in which a member of the public was seriously in-

jured or died due to contact with electrical equipment."

Hawaiian Electric offers these tips: Always look up and around for power lines before starting any harvesting or trimming activity. If any part of the tree is touching overhead power lines, the tree can become energized and you should not touch the tree. Use the 10-foot-rule: Always keep your body and any ladders, tools or other implements at least 10 feet away from overhead power lines. Don't use ladders or fruit pickers near power lines. Keep any type of ladders, fruit pickers, poles or other tools at least ten feet away from the lines.

Never trim trees that have power lines

going through them or touch any tree limb that may fall into a power line. It is strongly recommended that a qualified arborist be used to trim and maintain trees, especially trees near power lines. If a person comes into contact with a power line, assume the line is energized and dangerous. Do not attempt to free the person from the power line. Steer clear and warn others to keep away. Call 911 immediately for emergency help.

When seeing any object caught in a power line, assume the line is energized and do not attempt to free it. Call Hawaiian Electric's Trouble Line at (808) 969-6666 or call 911 in an emergency.



Hawaiian Electric warns against trimming trees and picking fruit near overhead power lines.

Photo from Hawaiian Electric

Hurricane Season, from pg. 11

keiki-friendly booklet featuring Maka the Super Safety Hero, it is available at hawaiianelectric.com/prepare.

On Hawai'i Island, printed copies of the handbook are available at public libraries, Ace Hardware and Ben Franklin stores. Anyone can also call Hawaiian Electric at (808) 969-0137 for copies of the publications.

Hawaiian Electric offers these tips to prepare for hurricane season:

- Gather emergency supplies, such as a battery-powered radio, flashlights, lanterns and batteries. Be prepared to monitor communications over emergency broadcast radio stations.

- Store enough water, non-perishable food, medicine and personal hygiene supplies for your family members and pets to last at least 14 days.

- Turn off and unplug all unnecessary electric appliances and equipment during a storm or a power outage. When power comes back and is stable, plug in the equipment one at a time.
- Shut off your electricity at the main breaker or switch if need to evacuate.
- Consider having a backup generator if dependent on an electrically powered life support system. Or, make plans to go to an alternate location where electricity will be available. Be prepared to take along medical equipment and medications.



Hurricane Anna flooding gulches along Wood Valley Road in 2014.

Photo by Julia Neal

Tawhiri Power LLC



TM

Hawaii's *CLEAN* renewable energy provider

see us at www.tawhiri.us

KEEPING HEALTHY

Volume 19, Number 6

A Journal of Good Health, Food, and Fitness

June 2021

COVID Variants Create Most Recent Cases

COVID variants are creating most of the illnesses attributed to coronavirus these days in Hawai'i, according to a report released today by Gov. David Ige and state Department of Health Director, Elizabeth Char, Md. She said, "The best way to protect yourself from the variants and slow their spread is to get vaccinated as soon as possible. We know the vaccines are effective against the current variants."

The research comes from Department of Health's State Laboratories Division and it shows COVID-19 (SARS-Cov-2) variants of concern accounting for a greater and increasing percentage of total COVID-19 cases in Hawai'i. The state Lab also reports a growing presence of the P.1

variant which is highly infectious and may be more resistant to antibodies from vaccination or previous infection.



Lab Director Dr. Edward Desmond said, "Variants of concern now make up more than 90 percent of the genomes sequenced by our lab. We detected our first variants in January and in just four months they have replaced the original COVID-19 lineages as the COVID we find most often."

The Lab has detected 1,023 specimens of variants of concern since the first variant of concern was detected in Hawai'i on January 21, 2021. The B.1.429 variant, first found in California, was the dominant variant in March and early April. It has been detected 631 times. The B.1.1.7

variant, first found in the United Kingdom, replaced the B.1.429 variant as the most dominant COVID strain in the state in late April. The B.1.1.7 variant now accounts for at least 61 percent of variants circulating in the islands. The B.1.1.7 has been detected 304 times.

Acting state Epidemiologist Dr Sarah Kemble said, "The B.1.1.7 and the B.1.429 variants are more transmissible than original COVID-19 lineages. These variants move more easily from person to person and therefore may spread more quickly through the community and be harder to contain." The P.1 variant, first detected in Brazil, has been found in 36 specimens in Hawai'i, including 22 on Maui and 13 on O'ahu.

Clyde Silva Sworn into Committee on Aging

Clyde Silva was sworn in to the County Committee on Aging on Friday. The Pāhala resident and President of the islandwide ILWU Pension Club Council, said he looks forward to joining the group that serves as "the eyes and ears of the district we represent on behalf of the county. The county oversees numerous nutrition, transportation and activities programs for the elderly, "who can come to us for any needs, concerns and ideas." He said he expects there to be many opportunities to serve "as we come out of the pandemic.



Clyde Silva (back row) was sworn on May 28 to the County Committee on Aging.

Many of the seniors have been isolated for a long time and look forward to getting together with others and rejoining programs like 'ukulele, dance, exercise, crafts and sewing." Catching up on medical and den-

tal appointments is also important, said Silva. His experience includes helping many of the pensioners who worked in the sugar industry in Ka'ū and around the island. He is president of the organization that includes the eight Pension Clubs around the island.

Silva and volunteers will be working with Horrace Farr, the county Executive on Aging. The agency also works with the Older Americans Adult & Aging Network and the State Policy Advisory Board for Elderly Affairs. Silva can be reached at 928-0222.

Abundant
Health Acupuncture



Serving the Ka'ū Communities

Centrally located on South Point Road
at Ka Lae Coffee & Hawaiian Flower Orchid Farm
(1 mile from the highway on the left)

Cassandra Cupples, L.Ac.
209-9977

Acupuncture stimulates the
body's self-healing
ability to restore its natural
flow of abundance

Insurance, Personal Injury and Work
Comp Welcome

Preferred Provider with:

- HMAA
- HMSA/American Specialty Health
- United Healthcare/Optum Health
- TriWest Choice (Veterans)

Welcoming Our New Physician to Our Friendly Clinic



Dr Jennifer Shrestha
Board-Certified Family Physician



Elizabeth Pacarro
Certified Family Nurse Practitioner



Call 932-4205 for an appointment

- Family Medicine/Primary Care
- Well-child check-ups
- Chronic disease management –
diabetes, hypertension, asthma
- Birth control and family planning
- Urgent care for minor illness and injuries
- X-rays and labs conveniently available
- Walk-ins welcome

1 Kamani Street | Pahala

KA PEPA VOLCANO

Volume 19, Number 6

The Good News of Ka'ū, Hawai'i

June 2021



Volcano Art Center Sets Wood Show & Exhibition

The Volcano Art Center announces the inaugural semi-annual Volcano Wood Show and Exhibition from Friday July 16 to Sunday, Aug. 8. Hours will be Wednesdays through Sundays from 10 a.m. to 4 p.m.

Participant categories are Student, Novice and Professional.

This event's goal is to feature wood artists who produce individual one-of-a-kind works featuring indigenous Hawaiian woods.

This year's show and exhibition will feature furniture, sculptures, and wood art by local island artisans. The show will be

located in the Volcano Art Center's Hale Ho o mana Dietrich Varez Hall & Educa-

tion Center.

Various items will be for sale, along with a woodworker pop up sale of tools and miscellaneous items. The event will include wood-working demonstrations.

Funds generated will be dedicated to the development of the Volcano Art Center's Art Van Go, a mobile classroom and woodshop.

Additional information and registration are available at: <https://volcanoartcenter.org/calling-all-woodworkers-volcano-wood-show-exhibition-2021/>. Also contact Volcano Art Center, P.O.BOX 129, Volcano, HI

96785. Call 808-967-8222. See www.volcanoartcenter.com



Segmented Hawaiian Koa Wood Platter with Exotic Wood Inlay is one of the many wooden art pieces offered by Volcano Art Center. Made of koa, mango, robusta and wenge woods, its creators are Mark and Karen Stebbins.

Buenaventura Report, from pg. 1

American Rescue Plan Act to areas where local schools are lacking the most. SB242 SD2 HD2 CD1 requires that public and charter schools offer education in computer science. SB811 HD1 CD1 requires the department of education to publish a weekly report on schools that have reported positive COVID-19 cases.

Affordable & Clean Energy: SB932 SD2 HD1 CD1 authorizes monies in the green infrastructure special fund to be used to finance the purchase of solar energy systems and other clean energy equipment, including the purchase or lease of electric vehicles. HB1142 HD2 SD2 CD1 allocates three cents of the barrel tax to fund the installation of electric vehicle (EV) charging systems. The measure also authorizes each county to establish penalties for failure to comply with its requirements or make reasonable efforts to maintain EV charging systems in working order.

Decent Work & Economic Growth: SB1043 SD2 HD1 CD1 expands the eligibility of organizations that can receive Community-based Economic Development (CBED) technical assistance for community-based organizations (non-profits) and businesses. HB1191 HD2 SD2 CD1 establishes the broadband infrastructure

grant program to award grants to applicants to extend deployment of infrastructure for broadband service to unserved and underserved areas of the State.

Reduced Inequalities: SB159 SD1 HD1 CD1 makes an application for voter registration part of all state identification card and driver's license applications. The measure also requires updating of names and addresses of qualified applicants who are already registered to vote unless the applicant declines. SB548 SD1 HD2 CD1 establishes a voters-with-special-needs advisory committee at the state and county levels. The measure also requires the Department of Public Safety and Hawai'i Paroling Authority to inform individuals on parole or probation of their right to vote and provide them with voting information; and requires the Office of Elections and the county clerks to make a determination, as soon as practicable, of the opti-

mal number and placement of voter service centers. SB793 SD1 HD1 CD1 repeals the exemption of individuals with disabilities from minimum wage requirements. Disabled employees can no longer be paid a sub minimum wage. HB282 HD1 SD2 CD1 Expands no cost emergency shelter to a consenting minor to include certain organizations who are not considered child placing organizations or child caring institutions.

Sustainable Communities: SB244 SD2 HD1 CD1 expands liability protection for donors to include donations of food and similar donations made to needy persons by organizations. The measure also authorizes the donation of expired food when the donor reasonably believes in good faith that the food remains fit for human consumption. HB79 HD1 SD2 CD1 establishes an affordable homeownership

Buenaventura Report, pg. 15

VOLCANO ART CENTER
WHERE PEOPLE, ART AND NATURE MEET

JUNE EVENTS

EXHIBIT: Nā Makana, a mixed media exhibition featuring the artwork of Nelson and Kainoa Makua from May 22 -June 27, 2021

6/1 - Keiki 3D Art & Design with Nikole Nelson

6/8 & 6/10 - Moving with and for our Water-Core Dance with Sue Schroeder

6/9 & 6/11 - Moving with and for our Water-Core Dance with Sue Schroeder

6/9 - Kid's Drawing Class with Ken Charon

6/12 - On-Site Soft Pastel Landscapae Painting with Patti Pease Johnson

6/12 - Zentangle: Journeys with Narfello with Dina Wood Kageler



Niulani Gallery in Volcano Village & VAC Gallery in Hawai'i Volcanoes National Park are OPEN! Visit our website for current hours

Office in Volcano Village:
(808) 967-8222
Gallery in HVNP:
(808) 967-7565
volcanoartcenter.org/shop

KILAUEA MILITARY CAMP
JOB OPENINGS

- Electrician - Closes 19 May, 2021
- Sales Clerk - Closes 23 Jul, 2021
- Inventory Control Clerk - Closes 23 Jul, 2021

For more information please contact (808) 967-8323 or apply online at www.usajobs.gov.

Friends of Hawai'i Volcanoes National Park

INSTITUTE-ON-DEMAND!
Design your own adventure in & around Hawai'i Volcanoes National Park

- Create a custom-designed field trip for your small or large group. Perfect for families, hui, senior & school groups, reunions & more!
- From geology to botany, culture & archeology to photography, you choose the focus, time & place.

www.fhvn.org • 985-7373

KDEN Auditions for Pirates of the Penzance

Auditions for *Pirates of the Penzance* have been announced by Kilauea Drama & Entertainment Network for the Gilbert & Sullivan summer musical. KDEN's auditions will be Monday and Tuesday, June 7 and 8, at 6:30 p.m. at KMC's Kilauea Theater. There are parts for all ages and abilities. Auditioners should be prepared to sing a song that best shows their vocal range and dress comfortably to move on the stage. There will be cold readings as well.

Principal characters include Richard - the Pirate King, Frederic - a pirate apprentice, Major General Stanley, Edward - Sergeant of Police, Mabel, Kate and Edith - Major Stanley's daughters and Ruth - a Pirate Maid-of-all-work. There is a chorus of Maidens, Pirates and Police. This classic features *I Am the Very Model of A Modern Major General* and *Poor Wandering One*. The show is being directed by Suzi Bond. Melanie Oldfather is the music director and Armando Mendoza will conduct the live orchestra.

Performance dates begin Aug. 6 on Fridays and Saturdays at 7:30 p.m., and Sundays at 2:30 p.m. in KMC's Kilauea Theater. They wrap up on Sunday, Aug. 22. For more information call 982-7344 or email kden73@aol.com.



Hawai‘i International Music Festival Returns to Pāhala

Hawai‘i International Music Festival announces a Post-Pandemic Mini-Season for 2021. Partnering with Pāhala Plantation Cottages, the Festival reemerges with



Amy Shoremount-Obra



Dr. Mann-Wen Lo

a live, streamed concert for the first time since the worldwide COVID-19 pandem-

ic began, featuring a roster of both local and international artists.

The Festival will be Friday July 23 through Sunday, July 25. Founded by Internationally Acclaimed Artists - Violin Virtuoso Eric Silberger, Metropolitan Opera Soprano Amy Shoremount-Obra and Esteemed Pianist Carlin Ma, the festival will include a concert and outreach events on Hawai‘i Island.

Operations Manager Taylor Yasui, of Honolulu, states, “We are excited to showcase the music and stories of acclaimed international and local artists, which adds to the unique and diverse musical landscape we have here in Hawai‘i.



Monica Chung

Each year HIMF strives to build upon our mission of presenting unique interdisciplinary classical music events and educational outreach programs for the community of Hawai‘i.”

The festival reemerges from the COVID-19 pandemic on Hawai‘i Island on Sunday, July 25, at 5:30 p.m. for a concert celebrating the return of its music to



Eric Silberger



Duane Padilla

Pāhala Plantation House featuring Shoremount-Obra, Silberger, acclaimed pianist and Kaua‘i resident Monica Chung; Na Hoku Hanohano nominated Mana Music Quartet, featuring Hawai‘i Symphony Orchestra cellist Joshua Nakazawa; internationally acclaimed violinist Dr. Mann-



Joshua Nakazawa

Wen Lo; and Honolulu resident and renowned violist Duane Padilla.

The concert will feature works by Debussy, Wagner and several other classical composers in addition to Hawai‘i’s own Queen Lili‘uokalani. See more at www.himusicfestival.com.

Ocean View's #1 Local High Speed Internet

Aloha Broadband has been serving KAU for 20 years

- ✓ No Contracts
- ✓ No Hidden Fees
- ✓ No Data Caps
- ✓ No Bundles

Words From The Locals:

“Aloha Broadband is the BEST Internet service on Hawaii Island!

I am getting friendly, responsive and knowledgeable customer service! Aloha Broadband is the BEST Internet service on Hawaii Island! I have used several other services over the years and experienced problems with down time, speed and unresponsive customer service.

“The Download Speed is in Cable Territory Without the Cable Problems

The download speed is in broadband cable territory without the cable problems and slow service from the cable internet provider in my area.

“Local and Great Customer Service

Love that your local and have great customer service. Aloha!

Local Business Helping The Local Community

Aloha Broadband Has Been Offering The Same Low Price For 20 Years

While some companies raise prices over time, Aloha Broadband has offered the same low price of \$50 for 20 years.

“We are committed to offering the same low price for years to come. It is important to have a local internet provider you can trust and rely on.” -Aloha Broadband Team

★★★★★

#1 Customer Service On The Island!

808.929.7668

www.alohabroadband.com

Aloha Broadband
Get Connected.



Mana Music Quartet

Buenaventura Report, from pg. 14
revolving fund within HHFDC to provide loans to nonprofit community development financial institutions and nonprofit housing development organizations for the development of affordable homeownership housing projects. HB683 HD2 SD1 CD1 establishes the sustainable aviation fuel program to provide matching grants to any small business in Hawai‘i that is developing products related to sustainable aviation fuel or greenhouse gas reduction from commercial aviation operations.

HB753 HD1 SD2 excludes housing developed by the Department of Hawaiian Home Lands from school impact fees for 3 years and allows construction cost component impact fees to be used to improve or renovate existing structures for school use. HB767 HD2 SD2 expands the Hawaii Farm-to-School Program from the Department of Agriculture to the Department of

Education. The measure also establishes a programmatic goal for the Department of Education that at least 30 percent of food served in public schools shall consist of locally sourced products by 2030.

Climate Action: HB243 HD1 SD2 CD1 requires the Office of Planning, in cooperation with each state agency, to identify existing and planned facilities that are vulnerable to sea level rise, flooding impacts, and natural hazards; assess a range of options to mitigate the impacts of sea level rise to those facilities; and submit annual reports to the Governor, Legislature, and Hawai‘i Climate Change Mitigation and Adaptation Commission.To view all bills passed during the 2021 Legislative Session, visit: <https://www.capitol.hawaii.gov/>. The Governor has until June 21, 2021, to provide the Legislature with notification of his intent to veto.



Valedictorian Stormy Pettit is one of 42 Ka'ū High School students to graduate in 2021. See more on Pages 1 and 7. Photo by Harry McIntosh

Valedictorian Message from Stormy Pettit

Stormy Pettit, Valedictorian for Ka'ū High Class of 2021, released this statement after graduation:

The graduating class of 2021 has undergone various challenges this past year, but regardless of the obstacles that seemed impossible, we were able to push through and finish this chapter of our lives.

I want to first give thanks to our fine administration and teachers who are able to leave behind a legacy for the new generation of graduates.

We can all be thankful for our families. These past four years have brought endless ups and downs and despite any situation, our moms, dads and guardians have always held our hands and offered endless support along the way. They were able to help shape the people we are today and thanks to them, we can take this first step into adulthood.

So, I want to say, thanks you to my mom and dad for the unconditional love and support and for always pushing me to do my best. I know I wouldn't be here today if not for you.

To my fellow graduates, as this chapter of our lives closes, the friendships and memories we collected along the way will last a lifetime and become a nostalgic memory. We have supported each other and helped one another succeed and I hope we will continue to provide support and encouragement for each of our future endeavors."

See more on graduation and Ka'ū High & Pahala Elementary's future on pages 1 and 7.

COUNTY OF HAWAII RURAL AREA JUNK VEHICLE COLLECTION

Hawaiian Ocean View Estates
July 17 & 18, 2021

Prior to this junk vehicle collection event, the County will hold pop-up events at the Hawaiian Ocean View Community Center to assist residents with permanently junking their certificate of titles, answering any questions about the event, and assisting with applications.

These pop-up events will be held Saturday, June 26th and Saturday, July 10th from 10 AM – 4 PM.

**You must have your Certificate of Title to take part in these pop-up events. If you do not have your Certificate of Title, you will need to obtain a duplicate Certificate of Title and permanently junk your title at one of the Vehicle Registration and Licensing offices.*

APPLICATIONS FOR THE COLLECTION EVENT MUST BE SUBMITTED BY JULY 10TH 2021

Applications are available at:

<https://www.hawaii Zerowaste.org/recycle/automotive/>

LET'S ALL DO OUR PART IN MAKING OUR ISLAND HOME MORE BEAUTIFUL ONE JUNK VEHICLE AT A TIME

County of Hawai'i is an Equal Opportunity Provider and Employer.



For more information, please contact the Derelict/Abandoned Vehicle Section at:

808-961-8552 or

DEMAV@HAWAIICOUNTY.GOV



ACCEPTING NEW PATIENTS!

Patrick Yeakey, MD
Family Practice

Naomi S. Whitaker MSN, FNP
Board Certified Family Nurse Practitioner



QUEST and most major insurances accepted.
Call 333.3600 for an appointment at any one of our health centers.
www.bayclinic.org

